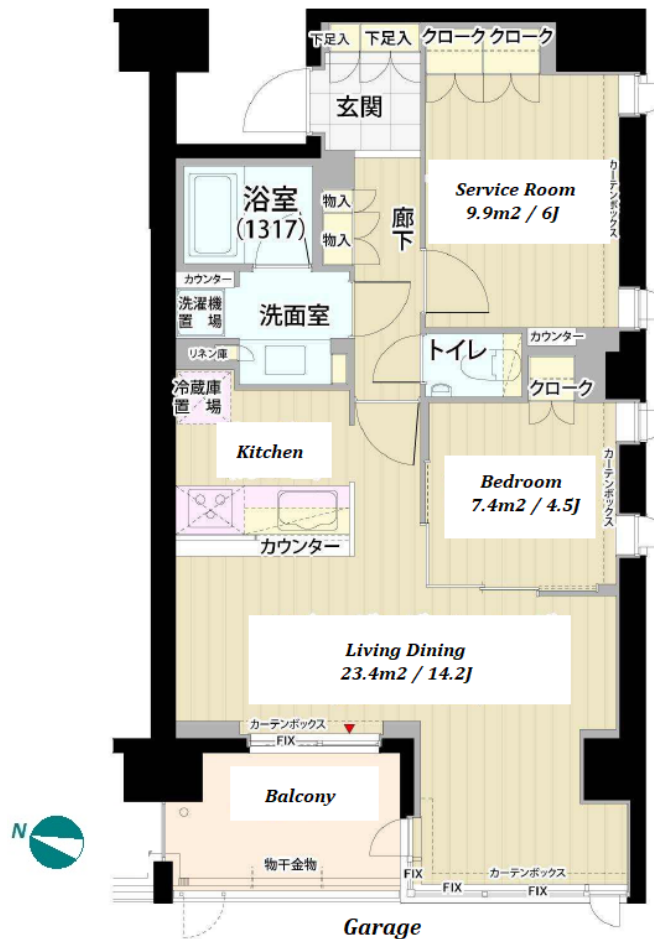
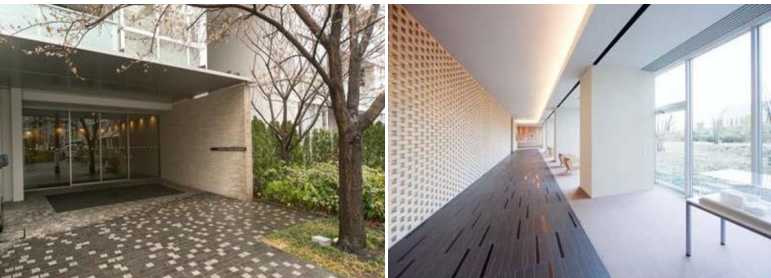


Property Name	GARDENIER KINUTA RESIDENCE	Unit No.	TYPE	Access	Soshigaya-okura Station on Odakyu Line (10 min) Chitosefunabashi Station on Odakyu Line (10 min)
		714	Apt.		
Address	2-14-12, Kinuta, Setagaya-Ku, Tokyo				

Low Rise Apt. at Complex Bldgs. w/ Facilities, near "Seijo"



*The actual Layout & Size may differ slightly from this floor plans & pictures.

Lease Conditions		
LAYOUT	2 BR	
SIZE	63.6 m²/684.58 ft²	
RENT	JPY 239,000 / month	
Management Fee	JPY10,000/month	
Deposit	2 months	Key Money 1 month
Lease Term	Standard lease for 24 months	
Available	End, Jun, 2024	
Renewal Fee	1 month	
Agent Fee	1 month + tax	
Other Info	Key Replacement Fee : JPY20,000 Tax not included / Guarantor Company : TBC / Auto lock / Air-Con / Separated Toilet / Balcony / Internet (Extra Charge) / Musical Instrument Negotiable / Flooring / Floor Heating / Bathroom dryer / Corner Unit	

Building Information			
Completion	Feb, 2008	Earthquake Resistance	New
Structure	RC, 10 floors above and 1 basement floors		
Car Parking	extra charge		
Bicycle Parking	for 1 space (Included)		
Music Instrument	Negotiable	Pet	Allowed
Facilities	Motorcycle Parking (JPY8,000 + tax / month) / Gym ((Included)) / Near Large Parks / Front desk / Janitor / Delivery box / Elevator		



HOUSEREP TOKYO INC.

ハウズレップトーキョー株式会社

#301, 1-4-15, Hiroo, Shibuya-ku, Tokyo 150-0012, Japan

+81 (0)3 6427 5860

inquiry@housserrep-tokyo.com

Transaction Type : Intermediate

Agent Fee : 1 month + tax

Website : www.housserrep-tokyo.com



Remarks
Renters Insurance : Required / Pet:additional deposit (1 month) / Pet : up to two small dogs/ No cat