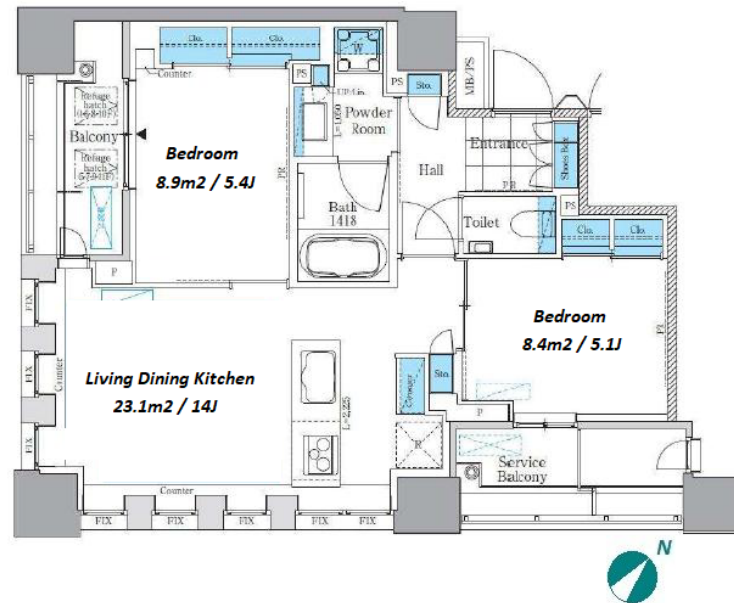


Property Name	PARK AXIS TSUKISHIMA MATURE STYLE	Unit No.	TYPE	Access	Tsukishima Station on Oedo Line (1 min) Tsukishima Station on Yurakucho Line (1 min)
		501	Apt.		
Address	1-3-12, Tsukishima, Chuo-Ku, Tokyo				

Luxury Serviced Residence in Water Front "Tsukishima" area



Lease Conditions		
LAYOUT	2 BR	
SIZE	57.03 m²/613.86 ft²	
RENT	JPY 315,000 / month	
Management Fee	-	
Deposit	2 months	Key Money 1 month
Lease Term	Fixed term lease for 24 months	
Available	Mid, Oct, 2024	
Renewal Fee	-	
Agent Fee	1 month + tax	
Other Info	Key Replacement Fee : JPY15,000 Tax not included / Guarantor Company : TBC / Auto lock / Air-Con / Separated Toilet / Balcony / Internet (Extra Charge) / Musical Instrument Negotiable / Flooring / Floor Heating / IH Stoves / Dishwasher / Bathroom dryer	

Building Information		
Completion	Oct, 2015	Earthquake Resistance New
Structure	RC, 12 floors above and 1 basement floors	
Car Parking	N/A	
Bicycle Parking	for 1 space (Included)	
Music Instrument	Negotiable	Pet Allowed
Facilities	Motorcycle Parking (TBC) / Front desk / Janitor / Delivery box / Elevator	

Remarks	
Fixed term lease : Re-contract fee: 1 month of new rent / Renters Insurance : Required / Bicycle parking : Registration fee: JPY.2,000+tax / Pet:additional deposit (1 month) / Pet : a small dog or a cat	

*The actual Layout & Size may differ slightly from this floor plans & pictures.



HOUSEREP TOKYO INC.

ハウスレップトーキョー株式会社

#301, 1-4-15, Hiroo, Shibuya-ku, Tokyo 150-0012, Japan

+81 (0)3 6427 5860

inquiry@housserrep-tokyo.com

Transaction Type : Intermediate

Agent Fee : 1 month + tax

Website : www.housserrep-tokyo.com

