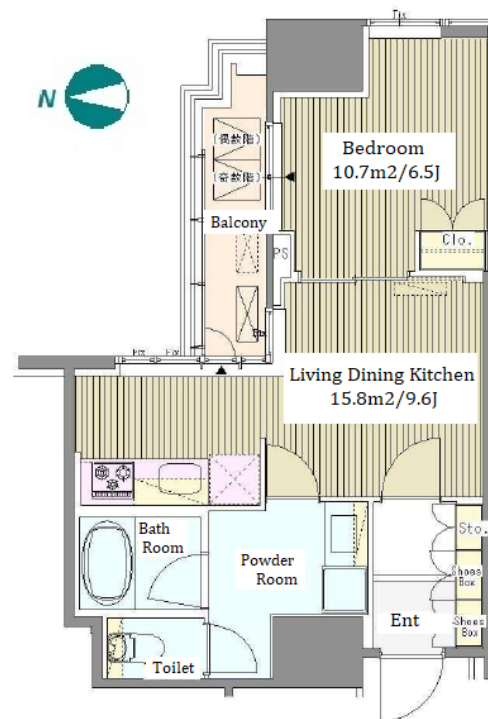


Property Name	WHITE TOWER HAMAMATSUCHO	Unit No.	TYPE	Access	Hamamatsuchou Station on JR Yamanote Line (3 min) Daimonn Station on Oedo Line (3 min)
		411	Apt.		
Address	1-13-2, Hamamatsucho, Minato-Ku, Tokyo				

## Tower Mansion at Hamamatsucho - Easy Access to Shinagawa / Tokyo



Lease Conditions	
LAYOUT	1 BR
SIZE	40.34 m²/434.21 ft²
RENT	JPY 205,000 / month
Management Fee	JPY10,000/month
Deposit	2 months
Key Money	1 month
Lease Term	Standard lease for 24 months
Available	End, May, 2024
Renewal Fee	1 month
Agent Fee	1 month + tax
Other Info	Key Replacement Fee : JPY20,000 Tax not included / Guarantor Company : TBC / Auto lock / Air-Con / Separated Toilet / Balcony / Penalty Fee for Early Cancellation / Musical Instrument Negotiable / CS/CATV / Flooring / Bathroom dryer

Building Information	
Completion	Feb, 2008
Earthquake Resistance	New
Structure	RC, 24 floors above and 1 basement floors
Car Parking	N/A
Bicycle Parking	N/A
Music Instrument	Negotiable
Pet	N/A
Facilities	Motorcycle Parking (TBC) / Within 20 min to Roppongi by train / Within 20 min to Tokyo station by car / Near Large Parks / Front desk / Janitor / Delivery box / Elevator / Security / Close to Station / High-rise

Remarks
Renters Insurance : Required

\*The actual Layout & Size may differ slightly from this floor plans & pictures.



HOUSEREP TOKYO INC.

ハウスレップトーキョー株式会社

#301, 1-4-15, Hiroo, Shibuya-ku, Tokyo 150-0012, Japan

+81 (0)3 6427 5860

inquiry@housserrep-tokyo.com

Transaction Type : Intermediate

Agent Fee : 1 month + tax

Website : www.housserrep-tokyo.com

