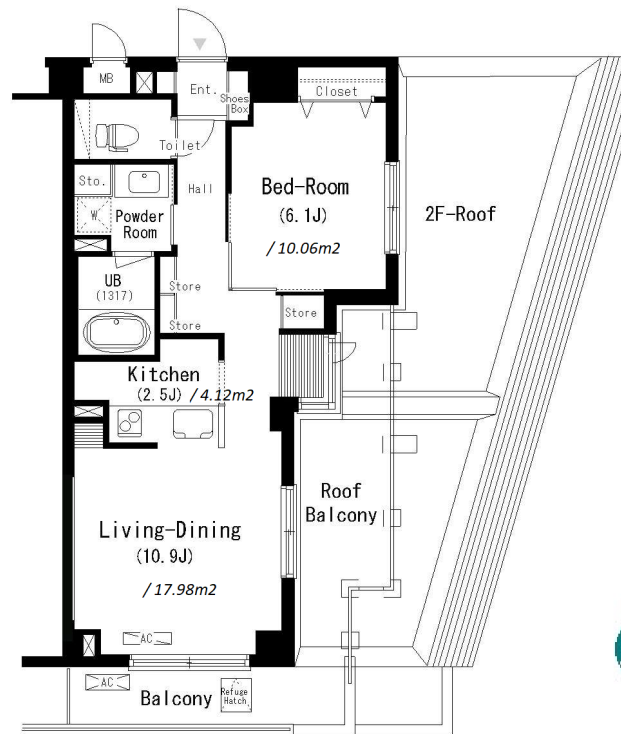


Property Name	PARK CUBE GAKUGEIDAIGAKU	Unit No.	TYPE	Access	Gakugeidaigaku Station on Toyoko Line (9 min) Yuutennji Station on Toyoko Line (13 min)
		308	Apt.		
Address	3-13-23, Gohongi, Meguro-Ku, Tokyo				

Low Rise Apt. in Gakugeidaigaku, in Calm Residential Area



Lease Conditions	
LAYOUT	1 BR
SIZE	50.04 m ² /538.62 ft ²
RENT	JPY 220,000 / month
Management Fee	JPY10,000/month
Deposit	2 months
Key Money	1 month
Lease Term	Standard lease for 24 months
Available	End, Jul, 2024
Renewal Fee	1 month
Agent Fee	1 month + tax
Other Info	Key Replacement Fee : JPY15,000 Tax not included / Guarantor Company : TBC / Auto lock / Air-Con / Separated Toilet / Balcony / Penalty Fee for Early Cancellation / Musical Instrument Negotiable / Roof Balcony / CS/CATV / Flooring / Bathroom dryer / Corner Unit

Building Information	
Completion	Mar, 2008
Earthquake Resistance	New
Structure	RC, 3 floors above
Car Parking	JPY32,000 + tax / month
Bicycle Parking	for 1 space (Included)
Music Instrument	Negotiable
Pet	Allowed
Facilities	Motorcycle Parking (JPY3,000 + tax / month) / Delivery box / Elevator

*The actual Layout & Size may differ slightly from this floor plans & pictures.



HOUSEREP TOKYO INC.
ハウスレップトーキョー株式会社

#301, 1-4-15, Hiroo, Shibuya-ku, Tokyo 150-0012, Japan
+81 (0)3 6427 5860 inquiry@housserrep-tokyo.com

Transaction Type : Intermediate
Agent Fee : 1 month + tax

Website : www.housserrep-tokyo.com



Remarks
Renters Insurance : Required / Pet:additional deposit (1 month) / Pet : a small dog or up to two cats