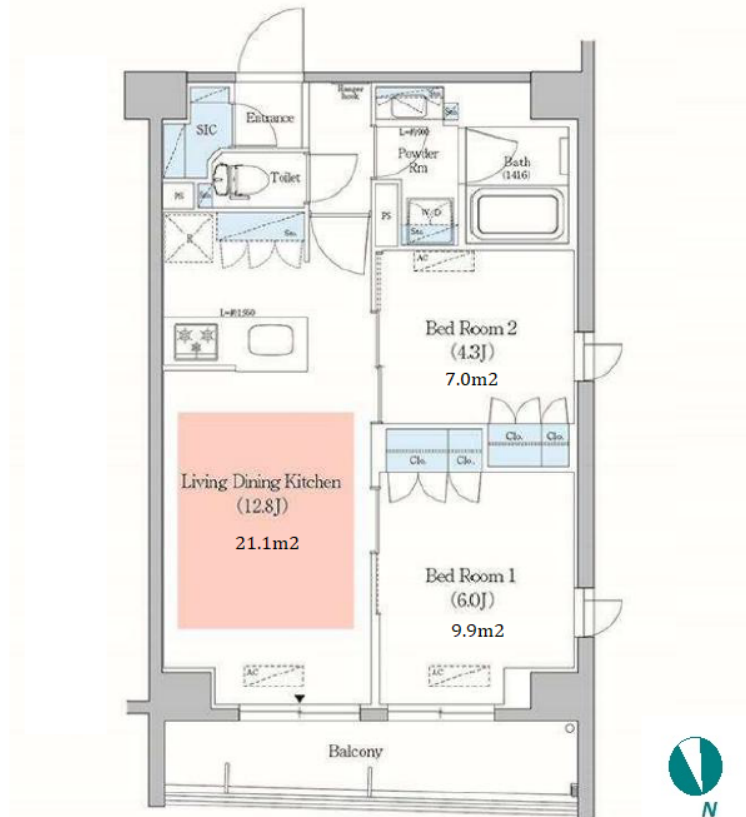
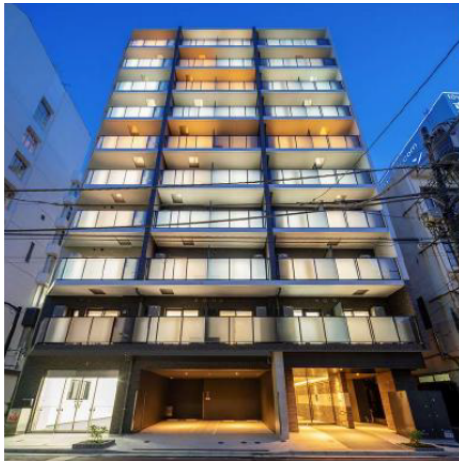


Property Name	URBANEX NIHOMBASHI BAKUROCHO	Unit No.	TYPE	Access	Bakurochou Station on JR Sobu Line (2 min) Asakusabashi Station on Toei Asakusa Line (5 min)
		1005	Apt.		
Address	2-2-15, Nihombashibakurocho, Chuo-Ku, Tokyo				

Modern Mid-rise Apt. near Asakusabashi area



Lease Conditions		
LAYOUT	2 BR	
SIZE	51.62 m ² /555.63 ft ²	
RENT	JPY 290,000 / month	
Management Fee	JPY20,000/month	
Deposit	2 months	Key Money -
Lease Term	Standard lease for 24 months	
Available	Now	
Renewal Fee	1 month	
Agent Fee	1 month + tax	
Other Info	Key Replacement Fee : JPY20,000 Tax not included / Guarantor Company : TBC / No Key Money / Auto lock / Air-Con / Separated Toilet / Balcony / Penalty Fee for Early Cancellation / Flooring / Floor Heating / Bathroom dryer	

Building Information		
Completion	May, 2022	Earthquake Resistance New
Structure	RC, 10 floors above	
Car Parking	TBC	
Bicycle Parking	JPY500 + tax / month	
Music Instrument	-	Pet N/A
Facilities	Delivery box / Elevator / Newly-built (~1 y/o)	

Remarks
Renters Insurance : Required

*The actual Layout & Size may differ slightly from this floor plans & pictures.



HOUSEREP TOKYO INC.

ハウスレップトーキョー株式会社

#301, 1-4-15, Hiroo, Shibuya-ku, Tokyo 150-0012, Japan

+81 (0)3 6427 5860 inquiry@housserrep-tokyo.com

Transaction Type : Intermediate

Agent Fee : 1 month + tax

Website : www.housserrep-tokyo.com

