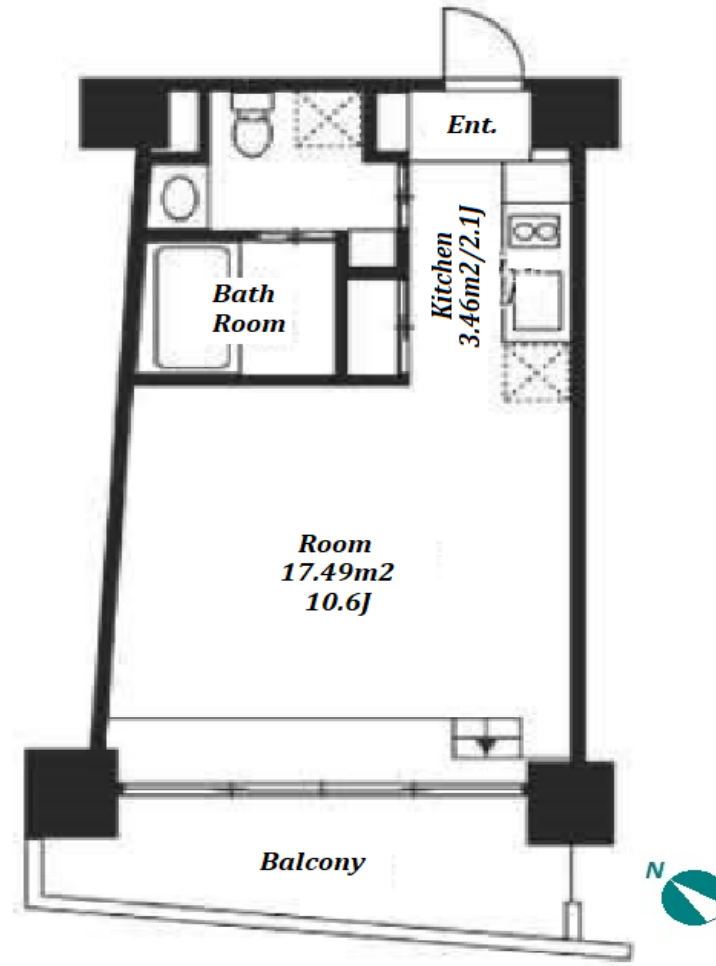


Property Name	RESIDIA MEGURO III	Unit No.	TYPE	Access	Meguro Station on Namboku Line (12 min) Meguro Station on JR Yamanote Line (13 min) Nakameguro Station on Hibiya Line (16 min)
		1001	Apt.		
Address	2-12-16, Meguro, Meguro-Ku, Tokyo				

Stylish Apartment in Meguro, near "Meguro River"



*The actual Layout & Size may differ slightly from this floor plans & pictures.

Lease Conditions	
LAYOUT	Studio
SIZE	30.25 m²/325.6 ft²
RENT	JPY 169,000 / month
Management Fee	JPY10,000/month
Deposit	2 months
Key Money	-
Lease Term	Standard lease for 24 months
Available	Mid, Dec, 2024
Renewal Fee	1 month
Agent Fee	1 month + tax
Other Info	Key Replacement Fee : JPY30,000 Tax not included / Guarantor Company : TBC / No Key Money / Auto lock / Air-Con / Separated Toilet / Balcony / Internet (Extra Charge) / Penalty Fee for Early Cancellation / Bathroom dryer

Building Information			
Completion	Jan, 2010	Earthquake Resistance	New
Structure	SRC, 10 floors above		
Car Parking	TBC		
Bicycle Parking	N/A		
Music Instrument	-	Pet	Negotiable
Facilities	Motorcycle Parking (TBC) / Delivery box		

Remarks
Tenant support fee: JPY.10,000+tax/2years Internet fee: JPY.1,500+tax/month



HOUSEREP TOKYO INC.

ハウスレップトーキョー株式会社

#301, 1-4-15, Hiroo, Shibuya-ku, Tokyo 150-0012, Japan

+81 (0)3 6427 5860

inquiry@housserrep-tokyo.com

Transaction Type : Intermediate

Agent Fee : 1 month + tax

Website : www.housserrep-tokyo.com

