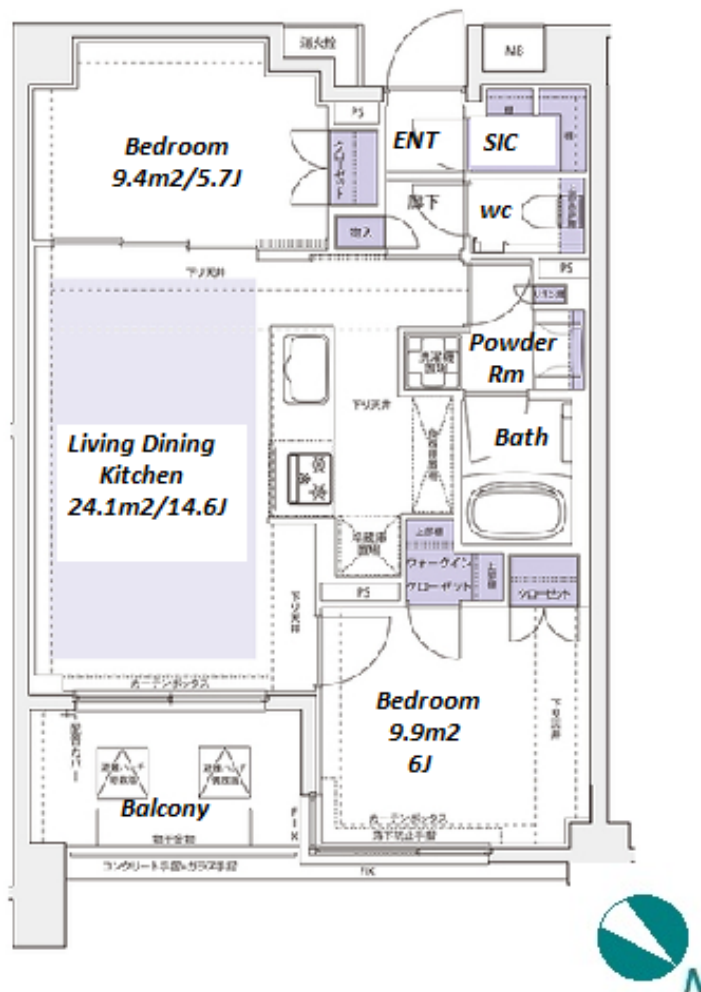
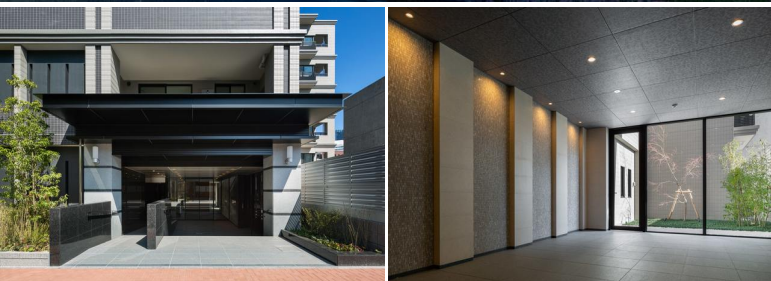


Property Name	KDX RESIDENCE YOKOHAMA MOMIJIZAKA	Unit No.	TYPE	Access	Sakuragichou Station on Blue Line (7 min) Sakuragichou Station on JR Negishi Line (7 min)
		710	Apt.		
Address	6-1, Momijigaoka, Nishi-Ku, Yokohama-Shi, Kanagawa				

Stylish Low Rise Apt. near Sakuragicho stn. and "Landmark Tower"



Lease Conditions		
LAYOUT	2 BR	
SIZE	57.49 m²/618.81 ft²	
RENT	JPY 265,000 / month	
Management Fee	JPY 15,000/month	
Deposit	2 months	Key Money 1 month
Lease Term	Standard lease for 24 months	
Available	Mid, Sep, 2024	
Renewal Fee	1 month	
Agent Fee	1 month + tax	
Other Info	Key Replacement Fee : JPY20,000 Tax not included / Guarantor Company : TBC / Auto lock / Air-Con / Separated Toilet / Balcony / Internet Included / CS/CATV / Flooring / Floor Heating / Dishwasher / Bathroom dryer / WIC	

Building Information		
Completion	Mar, 2021	Earthquake Resistance New
Structure	RC, 6 floors above and 1 basement floors	
Car Parking	TBC	
Bicycle Parking	JPY500 + tax / month	
Music Instrument	-	Pet Allowed
Facilities	Motorcycle Parking (TBC) / Near Large Parks / Janitor / Delivery box / Elevator / Newly-built (~7 y/o)	

*The actual Layout & Size may differ slightly from this floor plans & pictures.



HOUSEREP TOKYO INC.

ハウスレップトーキョー株式会社

#301, 1-4-15, Hiroo, Shibuya-ku, Tokyo 150-0012, Japan

+81 (0)3 6427 5860

inquiry@housserrep-tokyo.com

Transaction Type : Intermediate

Agent Fee : 1 month + tax

Website : www.housserrep-tokyo.com



Remarks
Renters Insurance : Required / Pet:additional deposit (1 month) / Pet : a small dog or a cat