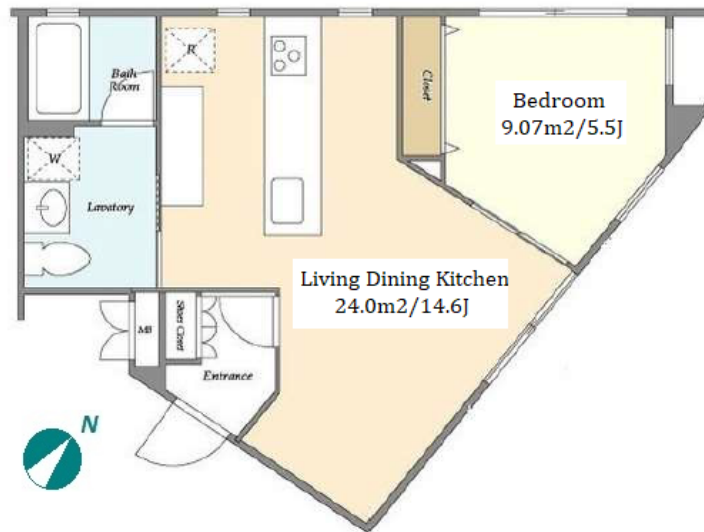


Property Name	CUORE NAKAMEGURO	Unit No.	TYPE	Access	Nakameguro Station on Toyoko Line (6 min)
		101	Apt.		
Address	3-3-4, Nakameguro, Meguro-Ku, Tokyo				

## New Low Rise Apt. in Nakameguro



Lease Conditions	
LAYOUT	1 BR
SIZE	46.54 m <sup>2</sup> /500.95 ft <sup>2</sup>
RENT	JPY 222,000 / month
Management Fee	JPY 10,000/month
Deposit	2 months
Key Money	1 month
Lease Term	Standard lease for 24 months
Available	Now
Renewal Fee	1 month
Agent Fee	1 month + tax
Other Info	Key Replacement Fee : JPY40,000 Tax not included / Guarantor Company : TBC / Auto lock / Air-Con / Separated Toilet / Penalty Fee for Early Cancellation / Flooring / IH Stoves / Bathroom dryer

Building Information	
Completion	Mar, 2020
Earthquake Resistance	New
Structure	SRC, 5 floors above
Car Parking	N/A
Bicycle Parking	N/A
Music Instrument	-
Pet	N/A
Facilities	Delivery box / Elevator

Remarks

\*The actual Layout & Size may differ slightly from this floor plans & pictures.



HOUSE REP TOKYO INC.

ハウスレップトーキョー株式会社

#301, 1-4-15, Hiroo, Shibuya-ku, Tokyo 150-0012, Japan

+81 (0)3 6427 5860

inquiry@housserep-tokyo.com

Transaction Type : Intermediate

Agent Fee : 1 month + tax

Website : www.housserep-tokyo.com

