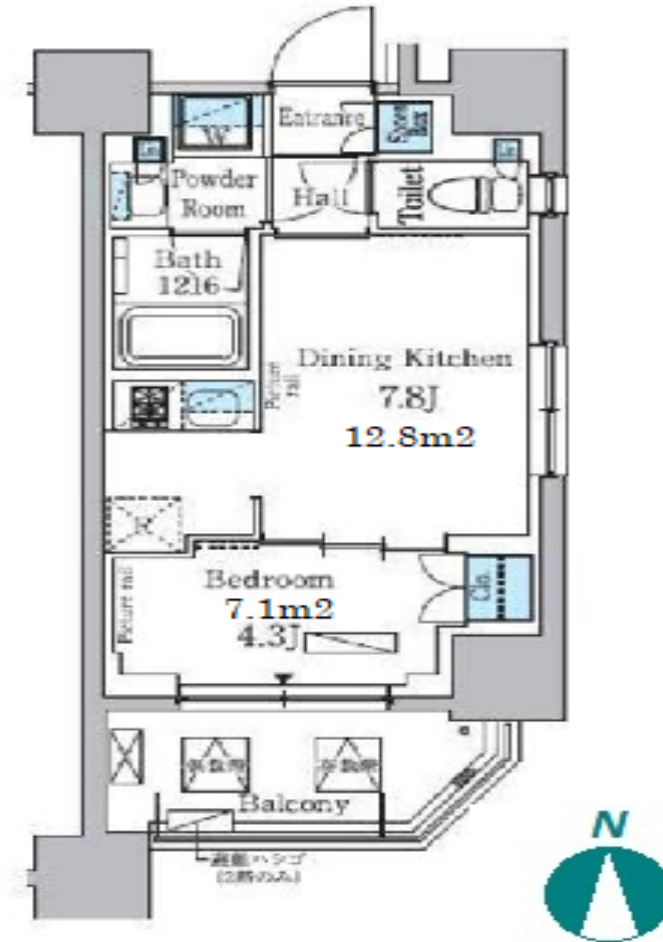
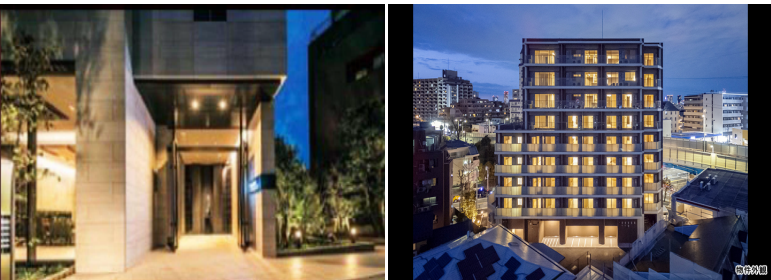


Property Name	PARK AXIS GAKUGEIDAIGAKU RESIDENCE	Unit No.	TYPE	Access	Gakugeidaigaku Station on Toyoko Line (11 min) Toritsudaigaku Station on Toyoko Line (15 min)
		903	Apt.		
Address	2-1-20, Kakinokizaka, Meguro-Ku, Tokyo				

Stylish Mid-rise Apt. near Komazawa Olympic Park



*The actual Layout & Size may differ slightly from this floor plans & pictures.

Lease Conditions		
LAYOUT	1 BR	
SIZE	30.13 m ² /324.31 ft ²	
RENT	JPY 159,000 / month	
Management Fee	-	
Deposit	2 months	Key Money 1 month
Lease Term	Standard lease for 24 months	
Available	End, Oct, 2024	
Renewal Fee	1 month	
Agent Fee	1 month + tax	
Other Info	Key Replacement Fee : JPY20,000 Tax not included / Guarantor Company : TBC / Auto lock / Air-Con / Separated Toilet / Balcony / Musical Instrument Negotiable / CS/CATV / Flooring / Bathroom dryer	

Building Information		
Completion	Feb, 2019	Earthquake Resistance New
Structure	RC, 9 floors above	
Car Parking	JPY33,000 + tax / month	
Bicycle Parking	for 1 space (Included)	
Music Instrument	Negotiable	Pet Allowed
Facilities	Motorcycle Parking (TBC) / Near Large Parks / Janitor / Delivery box / Elevator / Newly-built (~7 y/o)	

Remarks
Renters Insurance : Required / Pet:additional deposit (1 month) / Pet : a small dog or a cat



HOUSEREP TOKYO INC.

ハウズレップトーキョー株式会社

#301, 1-4-15, Hiroo, Shibuya-ku, Tokyo 150-0012, Japan

+81 (0)3 6427 5860

inquiry@housserrep-tokyo.com

Transaction Type : Intermediate

Agent Fee : 1 month + tax

Website : www.housserrep-tokyo.com

