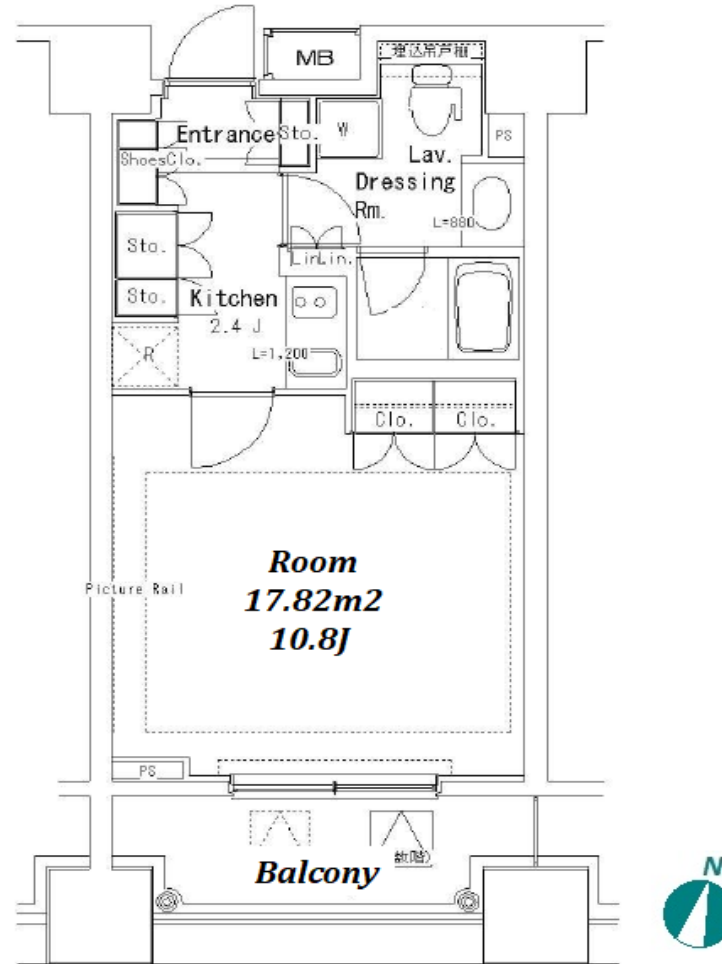


Property Name	PARK AXIS OCHANOMIZU STAGE	Unit No.	TYPE	Access	Suehirochou Station on Ginza Line (6 min) Yushima Station on Chiyoda Line (6 min) Ochanomizu Station on JR Chuo Line Rapid Service (8 min) Akihabara Station on JR Yamanote Line (13 min)
		1012	Apt.		
Address	3-2-14, Yushima, Bunkyo-Ku, Tokyo				

Mid-rise Apt. in Ochanomizu, near Akihabara



Lease Conditions	
LAYOUT	Studio
SIZE	33.48 m ² /360.37 ft ²
RENT	JPY 147,000 / month
Management Fee	JPY8,000/month
Deposit	2 months
Key Money	-
Lease Term	Standard lease for 24 months
Available	Now
Renewal Fee	1 month
Agent Fee	1 month + tax
Other Info	Key Replacement Fee : JPY15,000 Tax not included / Guarantor Company : TBC / No Key Money / Auto lock / Air-Con / Separated Toilet / Balcony / Penalty Fee for Early Cancellation / Musical Instrument Negotiable / CS/CATV / Flooring / Floor Heating / Bathroom dryer

Building Information	
Completion	Feb, 2006
Earthquake Resistance	New
Structure	RC, 14 floors above
Car Parking	extra charge
Bicycle Parking	for 1 space (Included)
Music Instrument	Negotiable
Pet	Allowed
Facilities	Motorcycle Parking (TBC) / Within 20 min to Tokyo station by car / Janitor / Delivery box / Elevator / Security

*The actual Layout & Size may differ slightly from this floor plans & pictures.



HOUSEREP TOKYO INC.

ハウスレップトーキョー株式会社

#301, 1-4-15, Hiroo, Shibuya-ku, Tokyo 150-0012, Japan

+81 (0)3 6427 5860

inquiry@housserrep-tokyo.com

Transaction Type : Intermediate

Agent Fee : 1 month + tax

Website : www.housserrep-tokyo.com



Remarks
Renters Insurance : Required / Bicycle parking : Registration sticker fee: JPY.2,000+tax / Pet:additional deposit (1 month) / Pet : up to two small dogs/ No cat