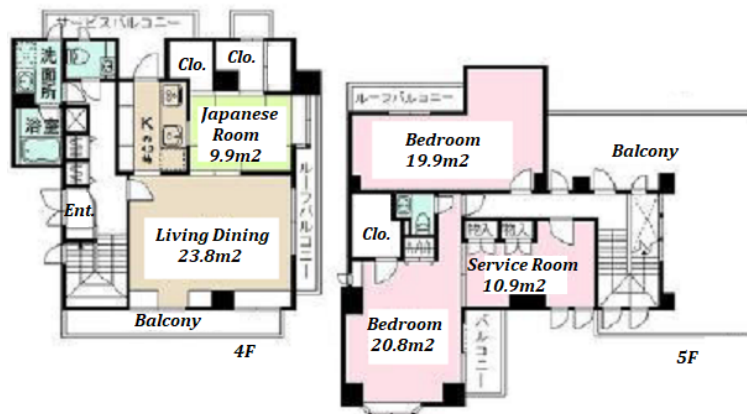


Property Name	ALICE KAN	Unit No.	TYPE	Access	Ichigaya Station on Namboku Line (3 min) Ichigaya Station on JR Chuo Line Rapid Service (4 min) Ichigaya Station on Toei Shinjuku Line (4 min)
		401	Apt.		
Address	21, Ichigayasanaicho, Shinjuku-Ku, Tokyo				

Cozy Apt. in Ichigaya / Kagurazaka



Lease Conditions	
LAYOUT	3 BR
SIZE	139.02 m ² /1496.39 ft ²
RENT	JPY 700,000 / month
Management Fee	-
Deposit	2 months
Key Money	1 month
Lease Term	Standard lease for 24 months
Available	Negotiable
Renewal Fee	1 month
Agent Fee	1 month + tax
Other Info	Key Replacement Fee : JPY20,000 Tax not included / Guarantor Company : TBC / Auto lock / Air-Con / Separated Toilet / Balcony / Roof Balcony / CS/CATV

Building Information			
Completion	Mar, 1998	Earthquake Resistance	New
Structure	RC, 5 floors above		
Car Parking	JPY38,000 + tax / month		
Bicycle Parking	N/A		
Music Instrument	-	Pet	-
Facilities	Motorcycle Parking (TBC) / French Community		

Remarks
Renters Insurance : Required

*The actual Layout & Size may differ slightly from this floor plans & pictures.



HOUSEREP TOKYO INC.

ハウズレップトーキョー株式会社

#301, 1-4-15, Hiroo, Shibuya-ku, Tokyo 150-0012, Japan

+81 (0)3 6427 5860

inquiry@housserep-tokyo.com

Transaction Type : Intermediate

Agent Fee : 1 month + tax

Website : www.housserep-tokyo.com

