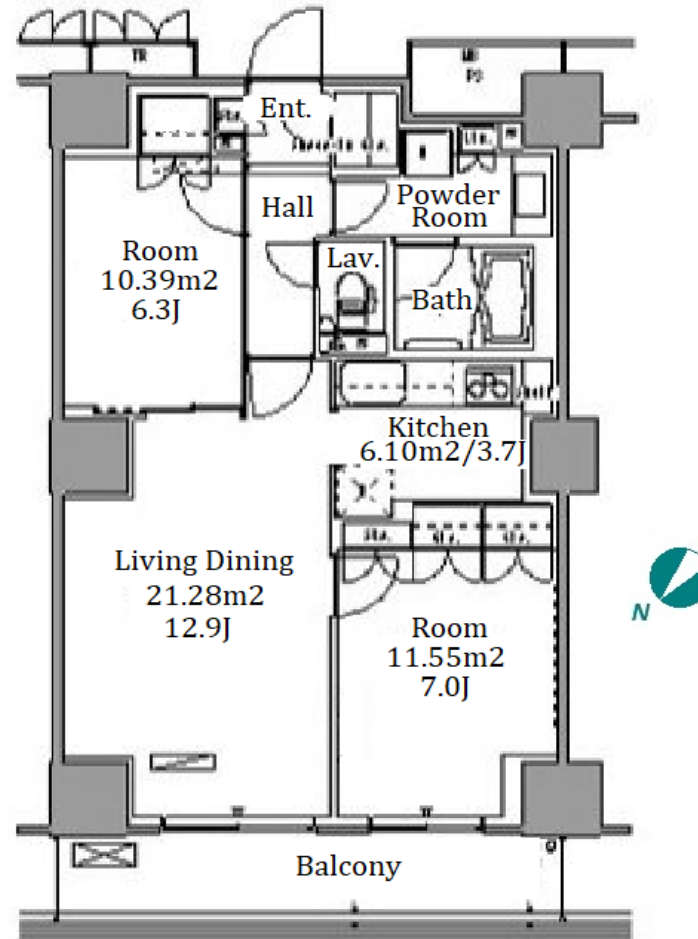


|               |                                |          |      |        |   |
|---------------|--------------------------------|----------|------|--------|---|
| Property Name | PARK AXIS TOYOSU               | Unit No. | TYPE | Access | Toyosu Station on Yurakucho Line (8 min)<br>Tsukishima Station on Yurakucho Line (14 min) |
|               |                                | 817      | Apt. |        |   |
| Address       | 1-2-39, Toyosu, Koto-Ku, Tokyo |          |      |        |   |

## Mid-rise Apt. in Toyosu, Tokyo Bay area



\*The actual Layout & Size may differ slightly from this floor plans & pictures.

| Lease Conditions |   |
|------------------|---|
| LAYOUT           | 2 BR  |
| SIZE             | 65.55 m <sup>2</sup> /705.57 ft <sup>2</sup>  |
| RENT             | JPY 262,000 / month   |
| Management Fee   | JPY10,000/month   |
| Deposit          | 2 months  |
| Key Money        | -   |
| Lease Term       | Standard lease for 24 months  |
| Available        | Mid, Sep, 2024  |
| Renewal Fee      | 1 month   |
| Agent Fee        | 1 month + tax   |
| Other Info       | Key Replacement Fee : JPY15,000 Tax not included /<br>Guarantor Company : TBC / No Key Money / Auto lock<br>/ Air-Con / Separated Toilet / Balcony / Penalty Fee for<br>Early Cancellation / Musical Instrument Negotiable /<br>CS/CATV / Flooring / IH Stoves / Bathroom dryer |

| Building Information |  |                       |         |
|----------------------|--|-----------------------|---------|
| Completion           | Mar, 2008  | Earthquake Resistance | New     |
| Structure            | RC, 20 floors above  |                       |         |
| Car Parking          | extra charge   |                       |         |
| Bicycle Parking      | JPY200 ~ 300 + tax / month   |                       |         |
| Music Instrument     | Negotiable   | Pet                   | Allowed |
| Facilities           | Motorcycle Parking (TBC) / Gym (( Included )) /<br>Concierge / Delivery box / Elevator |                       |         |

| Remarks  |
|--|
| Renters Insurance : Required / Pet:additional deposit ( 1 month ) / Pet :<br>a small dog or up to two cats ?Management fee: JPY.1,000/month for a<br>pet |



HOUSEREP TOKYO INC.

ハウスレップトーキョー株式会社

#301, 1-4-15, Hiroo, Shibuya-ku, Tokyo 150-0012, Japan

+81 (0)3 6427 5860

inquiry@housserrep-tokyo.com

Transaction Type : Intermediate

Agent Fee : 1 month + tax

Website : www.housserrep-tokyo.com

