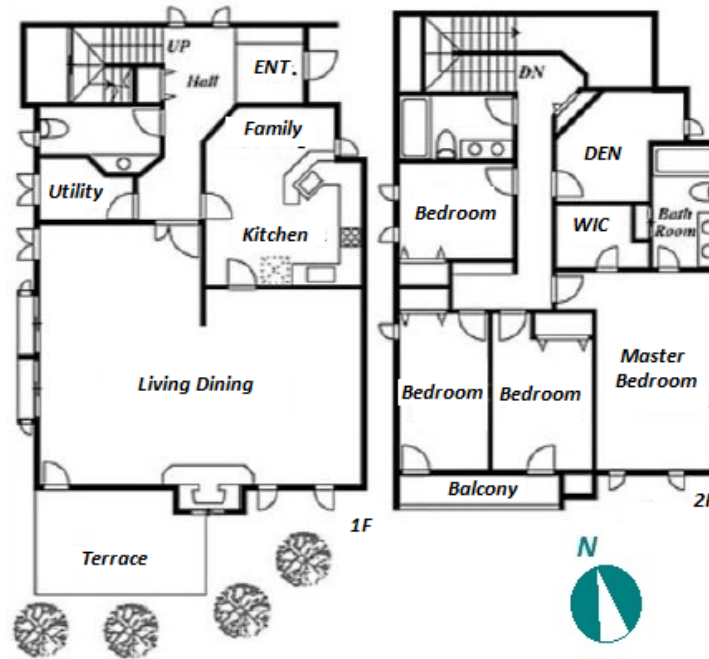


Property Name	TOMIGAYA RIVER LAND HOUSE B	Unit No.	TYPE	Access	Yoyogiuehara Station on Chiyoda Line (10 min)
		-	House		
Address	2-26-3, Tomigaya, Shibuya-Ku, Tokyo				



Lease Conditions		
LAYOUT	4 BR+S+Den	
SIZE	211.07 m <sup>2</sup> /2271.93 ft <sup>2</sup>	
RENT	JPY 850,000 / month	
Management Fee	-	
Deposit	4 months	Key Money -
Lease Term	Fixed term lease for 24 months	
Available	Early, Jul, 2024	
Renewal Fee	-	
Agent Fee	1 month + tax	
Other Info	Guarantor Company : TBC / No Key Money / Fridge / Separated Toilet / Balcony / Loft/Maisonnette / Internet (Extra Charge) / 2+ bathrooms / Garden/Terrace / Flooring / Dishwasher / WIC / 2 Car Parks / 2 Toilets / Private Yard	

Building Information			
Completion	Nov, 1987	Earthquake Resistance	New
Structure	Wooden, 2 floors above		
Car Parking	for 2 spaces ( Included )		
Bicycle Parking	( Included )		
Music Instrument	-	Pet	Negotiable
Facilities	Motorcycle Parking (( Included ))		

\*The actual Layout & Size may differ slightly from this floor plans & pictures.



HOUSEREP TOKYO INC.

ハウズレップトーキョー株式会社

#301, 1-4-15, Hiroo, Shibuya-ku, Tokyo 150-0012, Japan

+81 (0)3 6427 5860

inquiry@housserep-tokyo.com

Transaction Type : Intermediate

Agent Fee : 1 month + tax

Website : www.housserep-tokyo.com



Remarks	
Renters Insurance : Required	