

FOR RENT

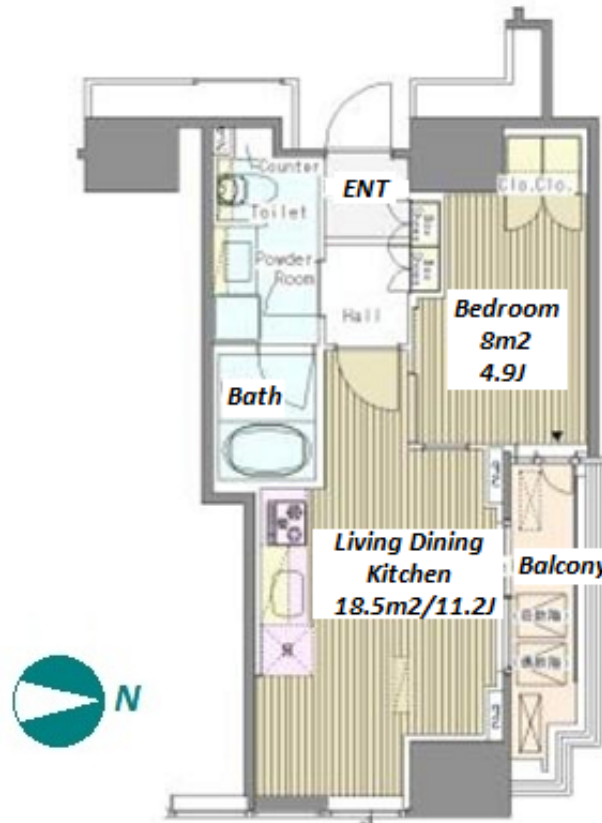
Property ID No. :132981

HOUSEREP TOKYO INC.

Website : www.housserep-tokyo.com

Property Name	WHITE TOWER HAMAMATSUCHO	Unit No.	TYPE	Access	Hamamatsuchou Station on JR Yamanote Line (3 min) Daimonn Station on Oedo Line (3 min)
		2209	Apt.		
Address	1-13-2, Hamamatsucho, Minato-Ku, Tokyo				

## Tower Mansion at Hamamatsucho - Easy Access to Shinagawa / Tokyo



\*The actual Layout & Size may differ slightly from this floor plans & pictures.

Lease Conditions			
LAYOUT	1 BR		
SIZE	39.32 m²/423.23 ft²		
RENT	JPY 215,000 / month		
Management Fee	-		
Deposit	2 months	Key Money	1 month
Lease Term	Standard lease for 24 months		
Available	End, Jun, 2024		
Renewal Fee	1 month		
Agent Fee	1 month + tax		
Other Info	Key Replacement Fee : JPY20,000 Tax not included / Auto lock / Air-Con / Separated Toilet / Internet (Extra Charge) / Penalty Fee for Early Cancellation / CS/CATV / Flooring / Floor Heating		
Building Information			
Completion	Feb, 2008	Earthquake Resistance	New
Structure	RC, 24 floors above and 1 basement floors		
Car Parking	N/A		
Bicycle Parking	N/A		
Music Instrument	-	Pet	-
Facilities	Within 20 min to Roppongi by train / Within 20 min to Tokyo station by car / Near Large Parks / Front desk / Janitor / Delivery box / Elevator / Security / Close to Station / High-rise		
Remarks			
Renters Insurance : Required			



# HOUSEREP TOKYO INC.

ハウスレップトーキョー株式会社

#301, 1-4-15, Hiroo, Shibuya-ku, Tokyo 150-0012, Japan

+81 (0)3 6427 5860

inquiry@housserep-tokyo.com

Transaction Type : Intermediate

Agent Fee : 1 month + tax

Website : www.housserep-tokyo.com

