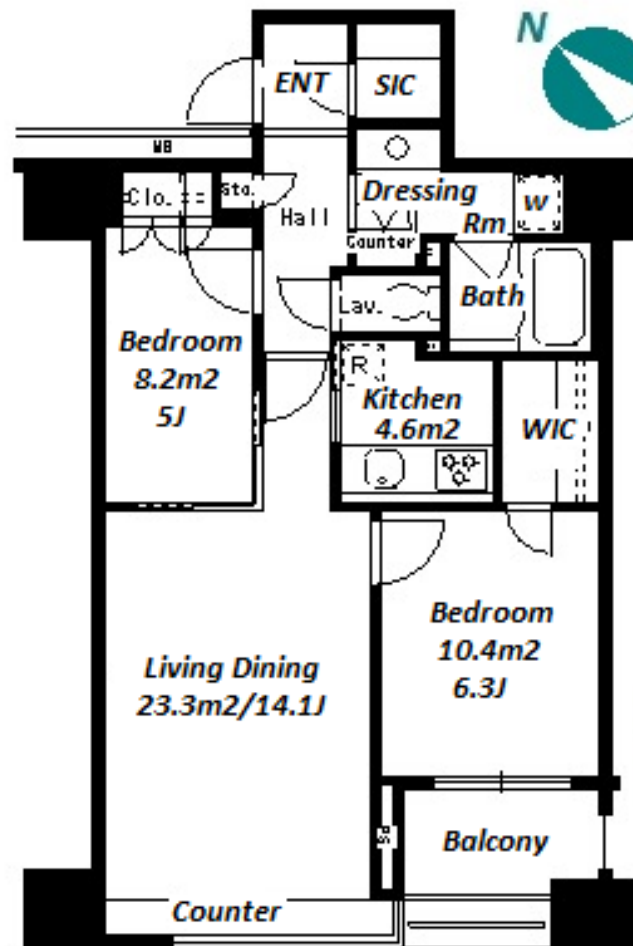
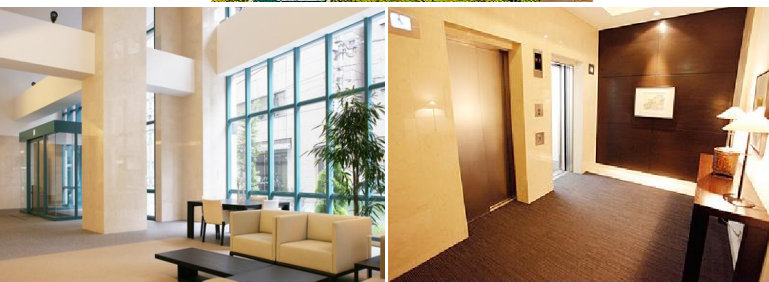


Property Name	PARK AXIS NIHONBASHI STAGE	Unit No.	TYPE	Access	Ninngyouchou Station on Hibiya Line (8 min) Hacchoubori Station on JR Keiyo Line (16 min)
		603	Apt.		
Address	1-37-12, Nihombashikakigaracho, Chuo-Ku, Tokyo				

Stylish Apt. in Nihonbashi, near Tokyo Sta. & Shopping Area



*The actual Layout & Size may differ slightly from this floor plans & pictures.

Lease Conditions	
LAYOUT	2 BR
SIZE	65.5 m²/705.03 ft²
RENT	JPY 321,000 / month
Management Fee	-
Deposit	2 months
Key Money	-
Lease Term	Standard lease for 24 months
Available	Now
Renewal Fee	1 month
Agent Fee	1 month + tax
Other Info	Key Replacement Fee : JPY15,000 Tax not included / Guarantor Company : TBC / No Key Money / Auto lock / Air-Con / Separated Toilet / Balcony / Penalty Fee for Early Cancellation / Musical Instrument Negotiable / CS/CATV / Flooring / Floor Heating / Bathroom dryer / WIC

Building Information	
Completion	Aug, 2004
Earthquake Resistance	New
Structure	RC, 14 floors above
Car Parking	JPY33,000 + tax / month
Bicycle Parking	extra charge
Music Instrument	Negotiable
Pet	-
Facilities	Motorcycle Parking (TBC) / Within 20 min to Tokyo station by car / Front desk / Janitor / Delivery box / Elevator / Security / 24h Garbage Drop-off

Remarks
Renters Insurance : Required



HOUSEREP TOKYO INC.

ハウスレップトーキョー株式会社

#301, 1-4-15, Hiroo, Shibuya-ku, Tokyo 150-0012, Japan

+81 (0)3 6427 5860 inquiry@housserrep-tokyo.com

Transaction Type : Intermediate

Agent Fee : 1 month + tax

Website : www.housserrep-tokyo.com

