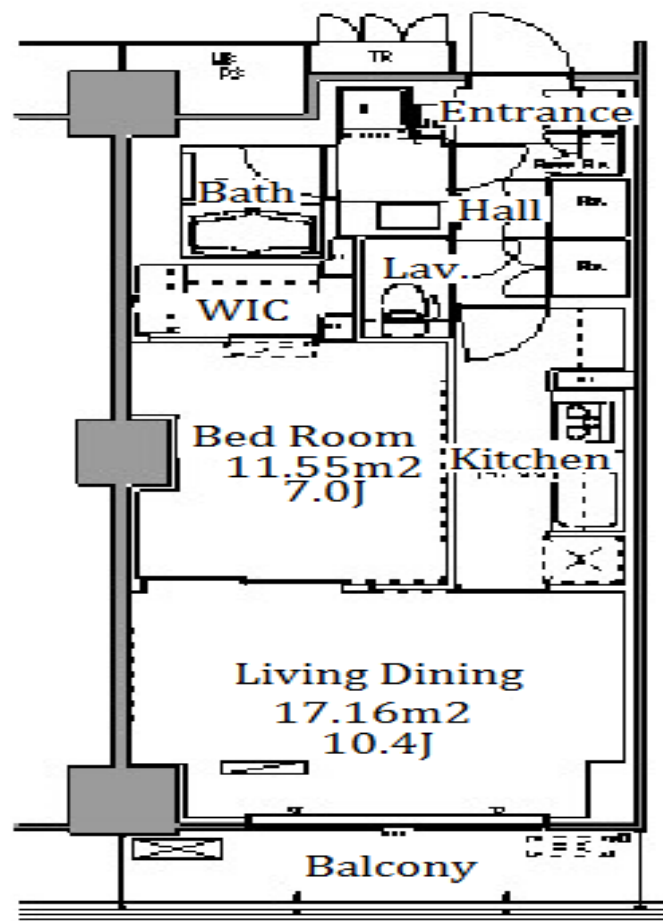
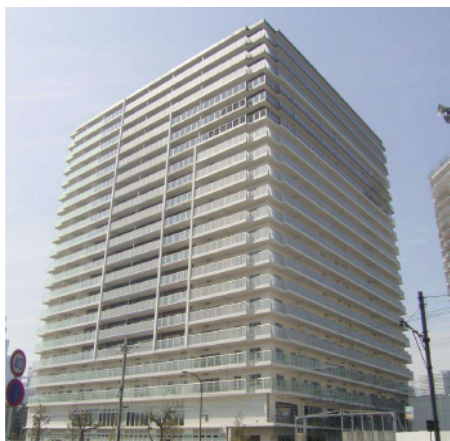


Property Name	PARK AXIS TOYOSU	Unit No.	TYPE	Access	Toyosu Station on Yurakucho Line (8 min) Tsukishima Station on Yurakucho Line (14 min)
		1214	Apt.		
Address	1-2-39, Toyosu, Koto-Ku, Tokyo				

## Mid-rise Apt. in Toyosu, Tokyo Bay area



Lease Conditions	
LAYOUT	1 BR
SIZE	53.13 m <sup>2</sup> /571.88 ft <sup>2</sup>
RENT	JPY 224,000 / month
Management Fee	JPY6,000/month
Deposit	2 months
Key Money	-
Lease Term	Standard lease for 24 months
Available	Now
Renewal Fee	1 month
Agent Fee	1 month + tax
Other Info	Key Replacement Fee : JPY15,000 Tax not included / Guarantor Company : TBC / No Key Money / Auto lock / Air-Con / Separated Toilet / Balcony / Penalty Fee for Early Cancellation / Musical Instrument Negotiable / CS/CATV / Flooring / IH Stoves / Bathroom dryer / WIC

Building Information			
Completion	Mar, 2008	Earthquake Resistance	New
Structure	RC, 20 floors above		
Car Parking	extra charge		
Bicycle Parking	JPY200 ~ 300 + tax / month		
Music Instrument	Negotiable	Pet	Allowed
Facilities	Motorcycle Parking (TBC) / Gym (( Included )) / Concierge / Delivery box / Elevator		

Remarks
Renters Insurance : Required / Pet:additional deposit ( 1 month ) / Pet : a small dg or up to two cats?Management fee: JPY.1,000/month for a pet

\*The actual Layout & Size may differ slightly from this floor plans & pictures.



HOUSEREP TOKYO INC.

ハウスレップトーキョー株式会社

#301, 1-4-15, Hiroo, Shibuya-ku, Tokyo 150-0012, Japan

+81 (0)3 6427 5860

inquiry@housserep-tokyo.com

Transaction Type : Intermediate

Agent Fee : 1 month + tax

Website : www.housserep-tokyo.com

