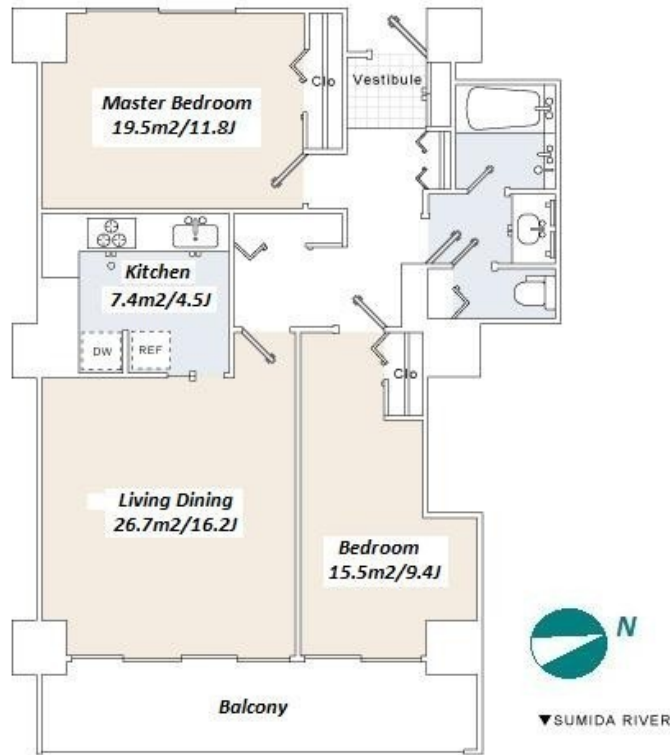
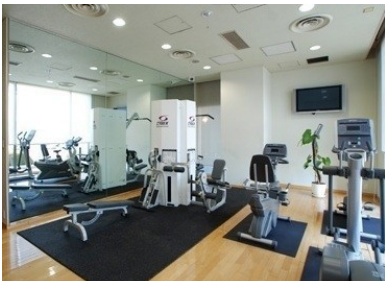


Property Name	SUMIDA RIVERSIDE TOWER	Unit No.	TYPE	Access	Hacchoubori Station on Hibiya Line (8 min) Suitennguumae Station on Hanzomon Line (11 min)
		1204	Apt.		
Address	1-28-7, Shinkawa, Chuo-Ku, Tokyo				

Luxury High Rise Tower Residence w/ Good View of "Sumida River"



Lease Conditions			
LAYOUT	2 BR		
SIZE	95.17 m²/1024.4 ft²		
RENT	JPY 403,000 / month		
Management Fee	-		
Deposit	3 months	Key Money	1 month
Lease Term	Fixed term lease for 24 months		
Available	Early, Oct, 2024		
Renewal Fee	-		
Agent Fee	1 month + tax		
Other Info	Guarantor Company : Available / Auto lock / Fridge / Air-Con / Separated Toilet / Balcony / Furnished / BBQ place / Washer / Dryer / Oven		

Building Information			
Completion	Jun, 1990	Earthquake Resistance	New
Structure	RC, 22 floors above and 1 basement floors		
Car Parking	JPY30,000 ~ 35,000 + tax / month		
Bicycle Parking	(Included) (JPY1,500 + tax / month)		
Music Instrument	-	Pet	-
Facilities	Motorcycle Parking (JPY3,000 + tax / month) / Trunk Room (JPY10,000 + tax / month) / Gym (Included) / Within 20 min to Roppongi by train / Within 20 min to Tokyo station by car / Near Large Parks / pool / Front desk / Concierge / Elevator / Fitness / Gym / High-rise		

Remarks
Renters Insurance : Required / Campaign Rent:300,000JPY

*The actual Layout & Size may differ slightly from this floor plans & pictures.



HOUSEREP TOKYO INC.

ハウスレップトーキョー株式会社

#301, 1-4-15, Hiroo, Shibuya-ku, Tokyo 150-0012, Japan

+81 (0)3 6427 5860

inquiry@housserrep-tokyo.com

Transaction Type : Intermediate

Agent Fee : 1 month + tax

Website : www.housserrep-tokyo.com

