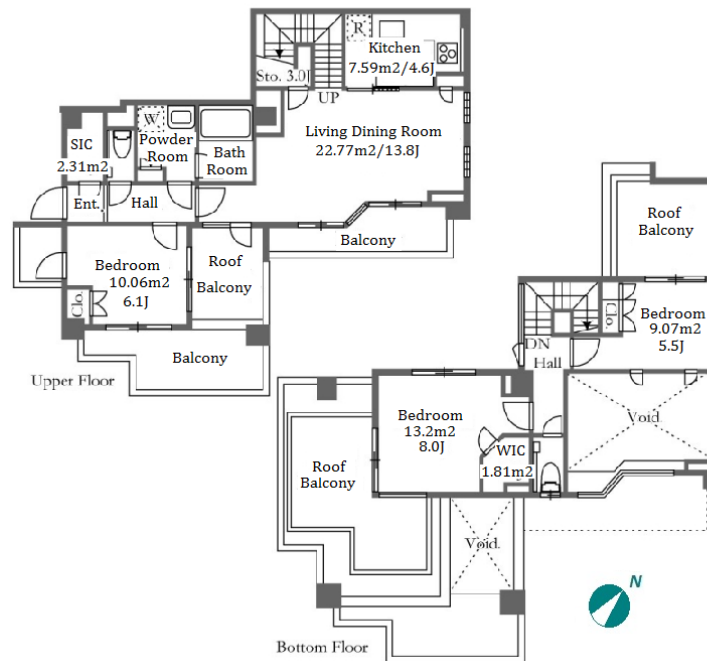


Property Name	PRIME URBAN SHINJUKU NATSUMEZAKA TOWER RESIDENCE	Unit No.	TYPE	Access	Ushigomeyanagichou Station on Oedo Line (4 min) Wakamatsukawada Station on Oedo Line (5 min)
		406	Apt.		
Address	3-21-1, Haramachi, Shinjuku-Ku, Tokyo				

## Tower Residence in Ichigaya - Kagurazaka area w/ Sports Gym



Lease Conditions		
LAYOUT	3 BR	
SIZE	98.96 m²/1065.19 ft²	
RENT	JPY 385,000 / month	
Management Fee	JPY15,000/month	
Deposit	2 months	Key Money -
Lease Term	Standard lease for 24 months	
Available	Now	
Renewal Fee	1 month	
Agent Fee	1 month + tax	
Other Info	Key Replacement Fee : JPY18,000 Tax included / No Key Money / Auto lock / Air-Con / Separated Toilet / Balcony / Loft/Maisonnette / Penalty Fee for Early Cancellation / Musical Instrument Negotiable / Roof Balcony / Flooring / IH Stoves / WIC / Corner Unit / 2 Toilets	

Building Information			
Completion	Feb, 2008	Earthquake Resistance	New
Structure	RC, 30 floors above and 1 basement floors		
Car Parking	JPY38,000 ~ 42,000 + tax / month		
Bicycle Parking	TBC		
Music Instrument	Negotiable	Pet	Allowed
Facilities	Trunk Room (JPY4,000 + tax / month) / Gym (( Included )) / Front desk / Delivery box / Elevator / Security / High-rise		

\*The actual Layout & Size may differ slightly from this floor plans & pictures.



# HOUSEREP TOKYO INC.

ハウスレップトーキョー株式会社

#301, 1-4-15, Hiroo, Shibuya-ku, Tokyo 150-0012, Japan

+81 (0)3 6427 5860

inquiry@housserrep-tokyo.com

Transaction Type : Intermediate

Agent Fee : 1 month + tax

Website : www.housserrep-tokyo.com



Remarks
Parking : 1 month for deposit / Pet:additional deposit ( 1 month )