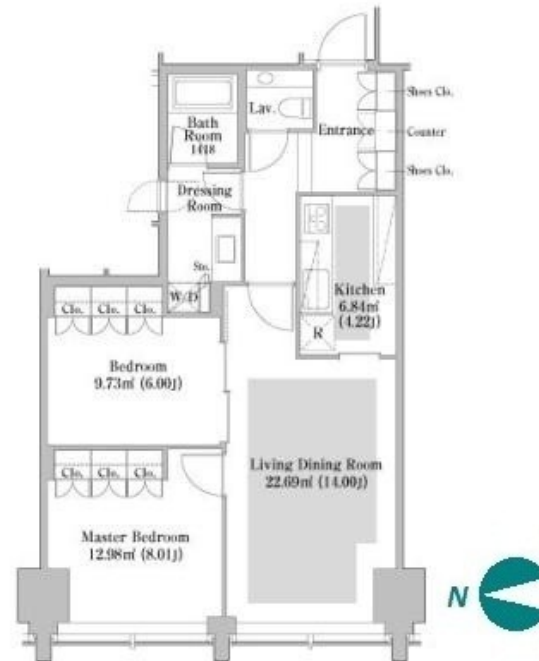
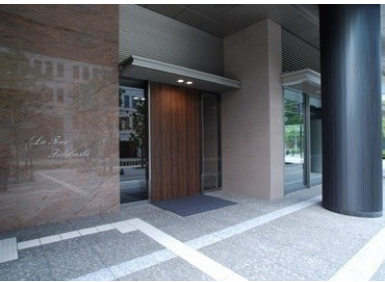


Property Name	LA TOUR IIDABASHI	Unit No.	TYPE	Access	Iidabashi Station on JR Chuo Line Rapid Service (6 min) Iidabashi Station on Yurakucho Line (6 min) Kourakuenn Station on Namboku Line (9 min)
		1705	Apt.		
Address	2-6-1, Koraku, Bunkyo-Ku, Tokyo				

Luxury Tower Residence in Iidabashi, near "Kagurazaka" Shopping Streets



Lease Conditions	
LAYOUT	2 BR
SIZE	73.8 m²/794.37 ft²
RENT	JPY 560,000 / month
Management Fee	-
Deposit	2 months
Key Money	-
Lease Term	Fixed term lease for 36 months
Available	Ask for Details
Renewal Fee	-
Agent Fee	1 month + tax
Other Info	Guarantor Company : TBC / Auto lock / Air-Con / Separated Toilet / Balcony / Internet Included / Penalty Fee for Early Cancellation / Roof Balcony / Floor Heating / Washer / Dryer

Building Information			
Completion	Apr, 2010	Earthquake Resistance	New
Structure	RC, 34 floors above		
Car Parking	JPY40,000 + tax / month		
Bicycle Parking	TBC		
Music Instrument	-	Pet	Negotiable
Facilities	Motorcycle Parking (TBC) / Trunk Room (extra charge) / Gym ((Included)) / Within 20 min to Tokyo station by car / Near Large Parks / French Community / Front desk / Concierge / Delivery box / Elevator / High-rise		

Remarks
Renters Insurance : TBC / Depreciation Fee : 1 month / Pet : additional 1 month for deposit

*The actual Layout & Size may differ slightly from this floor plans & pictures.



HOUSEREP TOKYO INC.

ハウスレップトーキョー株式会社

#301, 1-4-15, Hiroo, Shibuya-ku, Tokyo 150-0012, Japan

+81 (0)3 6427 5860

inquiry@housserrep-tokyo.com

Transaction Type : Intermediate

Agent Fee : 1 month + tax

Website : www.housserrep-tokyo.com

