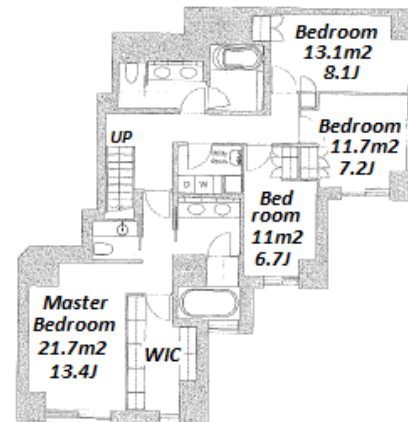
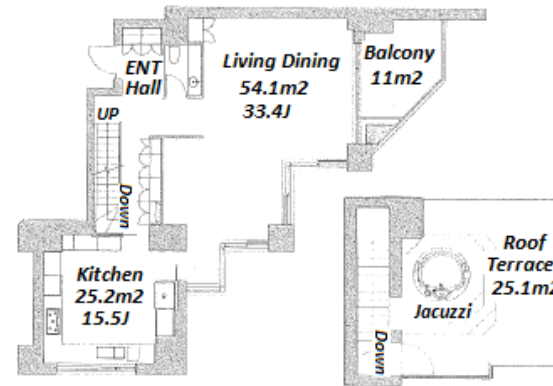


Property Name	AZABU GARDENS WEST	Unit No.	TYPE	Access	Azabujuban Station on Namboku Line (8 min) Roppongi Station on Hibiya Line (11 min) Hiroo Station on Hibiya Line (15 min)
		512	Apt.		
Address	3-7-5, Motoazabu, Minato-Ku, Tokyo				

## Modern Luxury Apt. in Azabu, near "Azabujuan" & "Roppongi Hills"



\*The actual Layout & Size may differ slightly from this floor plans & pictures.

Lease Conditions	
LAYOUT	4 BR
SIZE	230.78 m <sup>2</sup> /2484.09 ft <sup>2</sup>
RENT	JPY 2,750,000 / month
Management Fee	-
Deposit	4 months
Key Money	-
Lease Term	Fixed term lease for 24 months
Available	Now
Renewal Fee	-
Agent Fee	1 month + tax
Other Info	Auto lock / Fridge / Air-Con / Separated Toilet / Balcony / Loft/Maisonette / Roof Balcony / Curtain / Washer / Dryer / Oven

Building Information			
Completion	Apr, 2015	Earthquake Resistance	New
Structure	RC, 4 floors above and 3 basement floors		
Car Parking	TBC		
Bicycle Parking	TBC		
Music Instrument	-	Pet	Negotiable
Facilities	Motorcycle Parking (TBC) / Trunk Room (for 1 space( Included )) / Gym (( Included )) / Within 20 min walk to Roppongi / Near Large Parks / Front desk / Concierge / Janitor / Delivery box / Elevator / Fitness / Gym / Low-rise		

Remarks
Roof terrace with JacuzziHeated bathroom and kitchen floors



# HOUSEREP TOKYO INC.

ハウスレップトーキョー株式会社

#301, 1-4-15, Hiroo, Shibuya-ku, Tokyo 150-0012, Japan

+81 (0)3 6427 5860

inquiry@housserrep-tokyo.com

Transaction Type : Intermediate

Agent Fee : 1 month + tax

Website : www.housserrep-tokyo.com

