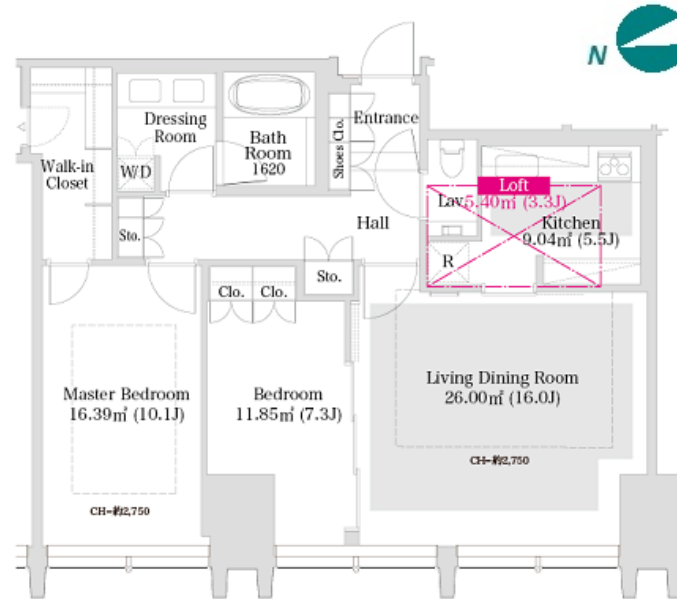


Property Name	LA TOUR SHINJUKU GRAND	Unit No.	TYPE	Access	Nishishinjuku Station on Marunouchi Line (6 min) Tochoumae Station on Oedo Line (10 min) Shinnjuku Station on JR Yamanote Line (15 min)
		3802	Apt.		
Address	8-17-2, Nishishinjuku, Shinjuku-Ku, Tokyo				

Luxury Tower Residence in Nishi-Shinjuku, near Central Park



Lease Conditions	
LAYOUT	2 BR
SIZE	90.43 m²/973.38 ft²
RENT	JPY 745,000 / month
Management Fee	-
Deposit	2 months
Key Money	-
Lease Term	Fixed term lease for 36 months
Available	Early, Sep, 2024
Renewal Fee	-
Agent Fee	1 month + tax
Other Info	Depreciation : 1 month / No Key Money / Auto lock / Air-Con / Separated Toilet / Loft/Maisonnette / Penalty Fee for Early Cancellation / WIC

Building Information			
Completion	Sep, 2011	Earthquake Resistance	New
Structure	RC, SRC, 40 floors above and 3 basement floors		
Car Parking	JPY40,000 ~ 60,000/ month		
Bicycle Parking	TBC		
Music Instrument	-	Pet	Negotiable
Facilities	Motorcycle Parking (TBC) / Trunk Room (extra charge) / Gym ((Included)) / Within 20 min walk to Roppongi / Within 20 min to Roppongi by train / Near Large Parks / Front desk / Concierge / Janitor / Elevator / High-rise		

Remarks

*The actual Layout & Size may differ slightly from this floor plans & pictures.



HOUSEREP TOKYO INC.

ハウスレップトーキョー株式会社

#301, 1-4-15, Hiroo, Shibuya-ku, Tokyo 150-0012, Japan

+81 (0)3 6427 5860

inquiry@housserrep-tokyo.com

Transaction Type : Intermediate

Agent Fee : 1 month + tax

Website : www.housserrep-tokyo.com

