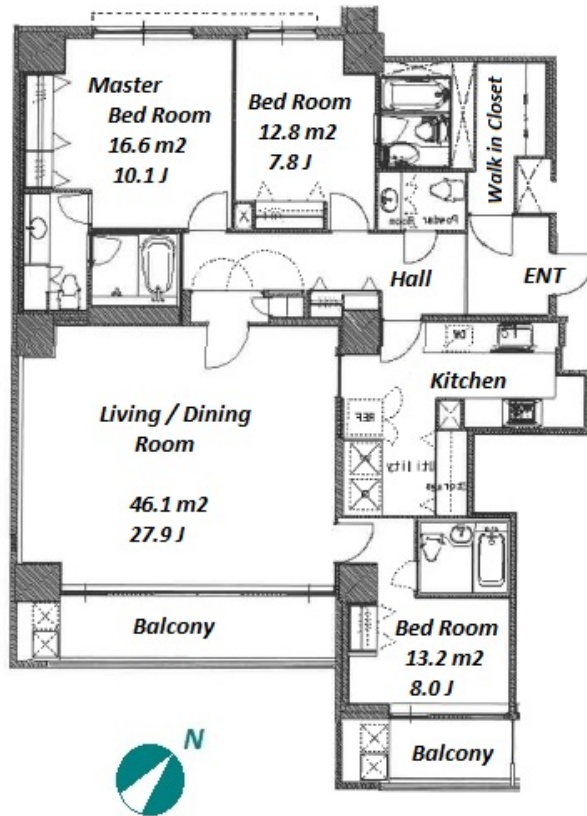


Property Name	SUMIDA RIVERSIDE TOWER	Unit No.	TYPE	Access	Hacchoubori Station on Hibiya Line (8 min) Suitennguumae Station on Hanzomon Line (11 min)
		1504	Apt.		
Address	1-28-7, Shinkawa, Chuo-Ku, Tokyo				

Luxury High Rise Tower Residence w/ Good View of "Sumida River"



Lease Conditions			
LAYOUT	3 BR		
SIZE	159 m ² /1711.46 ft ²		
RENT	JPY 680,000 / month		
Management Fee	-		
Deposit	4 months	Key Money	1 month
Lease Term	Fixed term lease for 24 months		
Available	End, Sep, 2024		
Renewal Fee	1 month		
Agent Fee	1 month + tax		
Other Info	Guarantor Company : TBC / Auto lock / Fridge / Air-Con / Separated Toilet / Balcony / Internet Included / Penalty Fee for Early Cancellation / 2+ bathrooms / Nice Views / BBQ place / Carpet / Washer / Dryer / Dishwasher / Oven / 2 Toilets		

Building Information			
Completion	Jun, 1990	Earthquake Resistance	New
Structure	RC, 22 floors above and 1 basement floors		
Car Parking	extra charge		
Bicycle Parking	extra charge		
Music Instrument	-	Pet	-
Facilities	Motorcycle Parking (JPY3,000 + tax / month) / Trunk Room (extra charge) / Gym ((Included)) / Within 20 min to Roppongi by train / Within 20 min to Tokyo station by car / Near Large Parks / pool / Front desk / Concierge / Elevator / High-rise		

Remarks
Renters Insurance : Required

*The actual Layout & Size may differ slightly from this floor plans & pictures.



HOUSEREP TOKYO INC.

ハウスレップトーキョー株式会社

#301, 1-4-15, Hiroo, Shibuya-ku, Tokyo 150-0012, Japan

+81 (0)3 6427 5860

inquiry@housserrep-tokyo.com

Transaction Type : Intermediate

Agent Fee : 1 month + tax

Website : www.housserrep-tokyo.com

