

FOR RENT

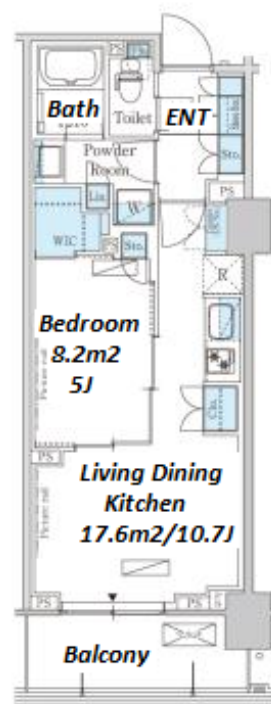
Property ID No. :96727

HOUSEREP TOKYO INC.

Website : www.housserep-tokyo.com

| | | | | | |
|---------------|--|----------|------|--------|---|
| Property Name | PARK AXIS IKEDAYAMA | Unit No. | TYPE | Access | Gotanda Station on Toei Asakusa Line (3 min) Gotanda Station on JR Yamanote Line (5 min) |
| | | 526 | Apt. | | |
| Address | 4-10-22, Higashigotanda, Shinagawa-Ku, Tokyo | | | | |

Stylish Apartment in Gotanda, near Meguro / Ebisu



| Lease Conditions | | | |
|------------------|---|-----------|---------|
| LAYOUT | 1 BR | | |
| SIZE | 40.61 m ² /437.12 ft ² | | |
| RENT | JPY 223,000 / month | | |
| Management Fee | - | | |
| Deposit | 2 months | Key Money | 1 month |
| Lease Term | Standard lease for 24 months | | |
| Available | End, Apr, 2024 | | |
| Renewal Fee | 1 month | | |
| Agent Fee | 1 month + tax | | |
| Other Info | Key Replacement Fee : JPY20,000 Tax not included / Guarantor Company : TBC / Auto lock / Air-Con / Separated Toilet / Balcony / Internet Included / Musical Instrument Negotiable / Flooring / Bathroom dryer / WIC | | |

| Building Information | | | |
|----------------------|--|-----------------------|---------|
| Completion | Mar, 2015 | Earthquake Resistance | New |
| Structure | RC, 12 story | | |
| Car Parking | JPY44,000 + tax / month | | |
| Bicycle Parking | for 1 space (Included) | | |
| Musical Instrument | Negotiable | Pet | Allowed |
| Facilities | Motorcycle Parking (JPY5,000 ~ 8,000 + tax / month) / Gym ((Included)) / Near Large Parks / Front desk / Delivery box / Elevator | | |

| Remarks |
|--|
| Renters Insurance : Required / Pet:additional deposit (1 month) / Pet : a small dog or a cat |

*The actual Layout & Size may differ slightly from this floor plans & pictures.



HOUSE REP TOKYO INC.

ハウスレップトーキョー株式会社

#301, 1-4-15, Hiroo, Shibuya-ku, Tokyo 150-0012, Japan

+81 (0)3 6427 5860

inquiry@housserep-tokyo.com

Transaction Type : Intermediate

Agent Fee : 1 month + tax

Website : www.housserep-tokyo.com

