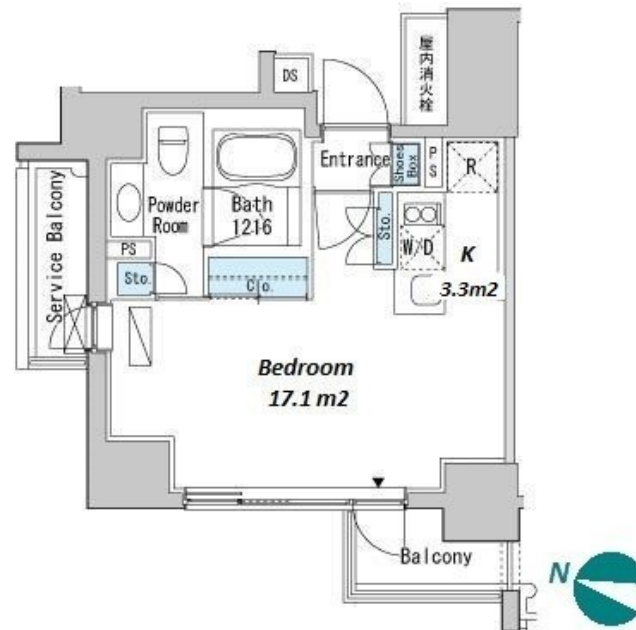
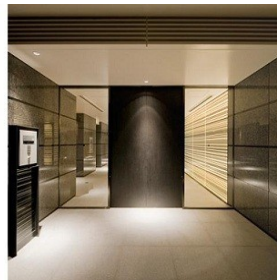
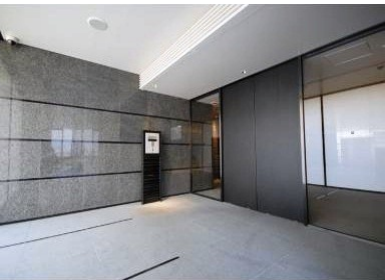


Property Name	BELLE FACE MEGURO	Unit No.	TYPE	Access	Meguro Station on Tokyu Meguro Line (9 min) Fudoumae Station on Tokyu Meguro Line (10 min) Gotanda Station on JR Yamanote Line (13 min)
		1304	Apt.		
Address	3-16-1, Nishigotanda, Shinagawa-Ku, Tokyo				

Stylish Apt. along Meguro River, near Gotanda



Lease Conditions			
LAYOUT	Studio		
SIZE	29.83 m ² /321.08 ft ²		
RENT	JPY 149,000 / month		
Management Fee	JPY 10,000/month		
Deposit	2 months	Key Money	1 month
Lease Term	Standard lease for 24 months		
Available	End, May, 2024		
Renewal Fee	1 month		
Agent Fee	1 month + tax		
Other Info	Key Replacement Fee : JPY 18,000 Tax not included / Guarantor Company : TBC / Auto lock / Air-Con / Separated Toilet / Balcony / Internet Included / Penalty Fee for Early Cancellation / Nice Views / Flooring / Washer / Dryer / Bathroom dryer		

Building Information			
Completion	Feb, 2010	Earthquake Resistance	New
Structure	RC, 14 floors above and 1 basement floors		
Car Parking	JPY 40,000 + tax / month		
Bicycle Parking	for 1 space (Included)		
Music Instrument	-	Pet	N/A
Facilities	Motorcycle Parking (TBC) / Delivery box / Elevator / Security		

Remarks
Parking : 1 month for deposit

*The actual Layout & Size may differ slightly from this floor plans & pictures.



HOUSEREP TOKYO INC.

ハウスレップトーキョー株式会社

#301, 1-4-15, Hiroo, Shibuya-ku, Tokyo 150-0012, Japan

+81 (0)3 6427 5860

inquiry@housserrep-tokyo.com

Transaction Type : Intermediate

Agent Fee : 1 month + tax

Website : www.housserrep-tokyo.com

