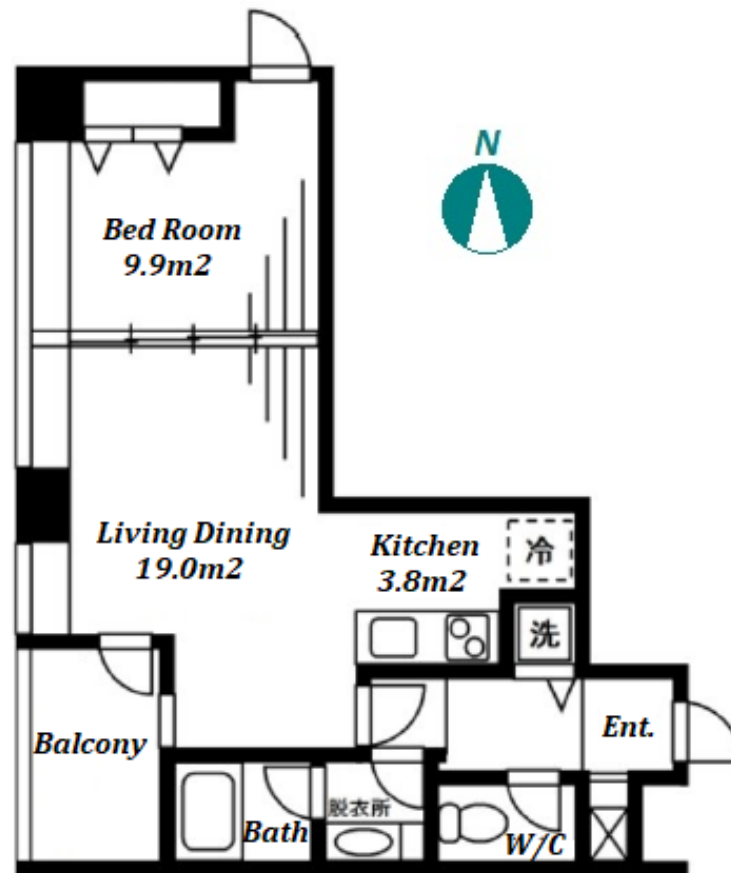


Property Name	RESIDIA TOWER AZABUJUBAN	Unit No.	TYPE	Access	Azabujuban Station on Namboku Line (4 min) Azabujuban Station on Oedo Line (4 min)
		1006	Apt.		
Address	1-1-12, Mita, Minato-Ku, Tokyo				

Cozy Apartment in Azabujuban, near "Roppongi Hills" & "Tokyo Tower"



\*The actual Layout & Size may differ slightly from this floor plans & pictures.

Lease Conditions			
LAYOUT	1 BR		
SIZE	43.93 m²/472.85 ft²		
RENT	JPY 233,000 / month		
Management Fee	JPY15,000/month		
Deposit	2 months	Key Money	1 month
Lease Term	Fixed term lease for 24 months		
Available	Early, Feb, 2024		
Renewal Fee	-		
Agent Fee	1 month + tax		
Other Info	Key Replacement Fee : JPY36,000 Tax not included / Guarantor Company : TBC / Auto lock / Air-Con / Separated Toilet / Balcony / Penalty Fee for Early Cancellation / CS/CATV / Flooring		

Building Information			
Completion	Jan, 2003	Earthquake Resistance	New
Structure	RC, 25 story		
Car Parking	JPY50,000 + tax / month		
Bicycle Parking	TBC		
Music Instrument	-	Pet	N/A
Facilities	Motorcycle Parking (TBC) / Gym (( Included )) / Within 20 min walk to Roppongi / Within 20 min to Roppongi by train / Near Large Parks / Front desk / Concierge / Delivery box / Elevator / Security / Close to Station / Fitness / Gym / High-rise		

Remarks
Fixed term lease : Re-Contract fee : 1 month / Renters Insurance : Required / Tenant support fee: JPY.10,000+tax/2years / Parking : 1 month deposit



HOUSEREP TOKYO INC.

ハウスレップトーキョー株式会社

#301, 1-4-15, Hiroo, Shibuya-ku, Tokyo 150-0012, Japan

+81 (0)3 6427 5860

inquiry@housserep-tokyo.com

Transaction Type : Intermediate

Agent Fee : 1 month + tax

Website : www.housserep-tokyo.com

