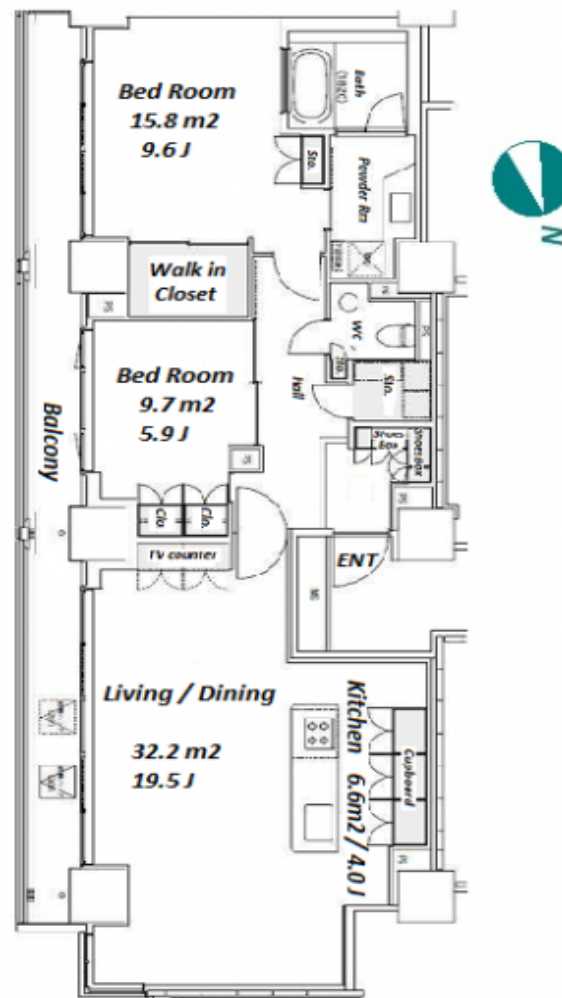
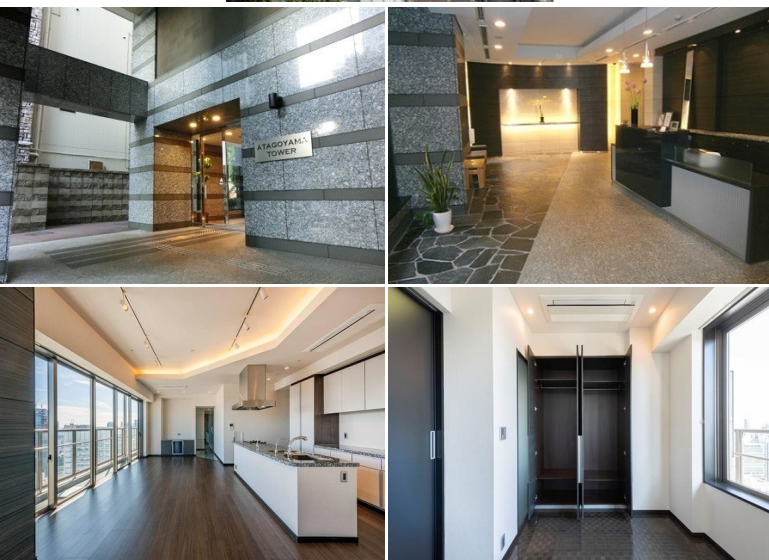


Property Name	PARK CUBE ATAGOYAMA TOWER	Unit No.	TYPE	Access	Kamiyachou Station on Hibiya Line (7 min) Toranomon Hills Station on Ginza Line (8 min)
		3003	Apt.		
Address	3-17-7, Nishishimbashi, Minato-Ku, Tokyo				

High Rise Apt in Onarimon, near "Tokyo Tower" & "Toranomon Hills"



*The actual Layout & Size may differ slightly from this floor plans & pictures.

Lease Conditions			
LAYOUT	2 BR		
SIZE	99.88 m ² /1075.09 ft ²		
RENT	JPY 588,000 / month		
Management Fee	-		
Deposit	2 months	Key Money	-
Lease Term	Standard lease for 24 months		
Available	Now		
Renewal Fee	1 month		
Agent Fee	1 month + tax		
Other Info	Key Replacement Fee : JPY15,000 Tax not included / Guarantor Company : TBC / No Key Money / Auto lock / Air-Con / Separated Toilet / Balcony / Penalty Fee for Early Cancellation / CS/CATV / Flooring / Washer / Dryer / Dishwasher / Bathroom dryer / WIC		

Building Information			
Completion	Feb, 2007	Earthquake Resistance	New
Structure	RC, 31 story		
Car Parking	JPY45,000 + tax / month		
Bicycle Parking	TBC		
Music Instrument	-	Pet	Allowed
Facilities	Motorcycle Parking (TBC) / Within 20 min to Roppongi by train / Within 20 min to Tokyo station by car / Near Large Parks / Front desk / Delivery box / Elevator / High-rise		

Remarks
Renters Insurance : Required / Pet:additional deposit (1 month) / Pet : a small dog or a cat



HOUSEREP TOKYO INC.

ハウスレップトーキョー株式会社

#301, 1-4-15, Hiroo, Shibuya-ku, Tokyo 150-0012, Japan

+81 (0)3 6427 5860

inquiry@housserep-tokyo.com

Transaction Type : Intermediate

Agent Fee : 1 month + tax

Website : www.housserep-tokyo.com

