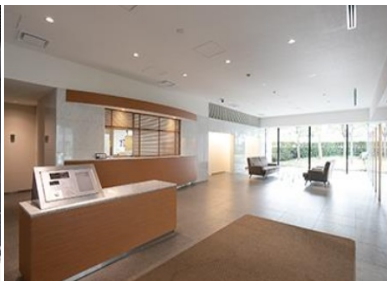


Property Name	RIVER & TOWER	Unit No.	TYPE	Access	Suitennguumae Station on Hanzomon Line (6 min) Kayabachou Station on Hibiya Line (8 min)
		405	Apt.		
Address	19-7, Nihombashihakozakicho, Chuo-Ku, Tokyo				

High Rise Apt. Near "Sumida River", Tokyo Bay Area



Lease Conditions	
LAYOUT	2 BR
SIZE	68.2 m ² /734.09 ft ²
RENT	JPY 220,000 / month
Management Fee	JPY 15,000/month
Deposit	1 month
Key Money	2 months
Lease Term	Ask for Details for months
Available	Negotiable
Renewal Fee	1 month
Agent Fee	1 month + tax
Other Info	Key Replacement Fee : JPY20,000 Tax not included / Guarantor Company : TBC / Auto lock / Air-Con / Separated Toilet / Balcony / Musical Instrument Negotiable / Flooring

Building Information			
Completion	Mar, 1989	Earthquake Resistance	New
Structure	RC, 19 floors above		
Car Parking	N/A		
Bicycle Parking	TBC		
Music Instrument	Negotiable	Pet	-
Facilities	Janitor / Elevator / High-rise		

Remarks
Renters Insurance : Required

*The actual Layout & Size may differ slightly from this floor plans & pictures.



HOUSEREP TOKYO INC.

ハウスレップトーキョー株式会社

#301, 1-4-15, Hiroo, Shibuya-ku, Tokyo 150-0012, Japan

+81 (0)3 6427 5860

inquiry@housserrep-tokyo.com

Transaction Type : Intermediate

Agent Fee : 1 month + tax

Website : www.housserrep-tokyo.com

