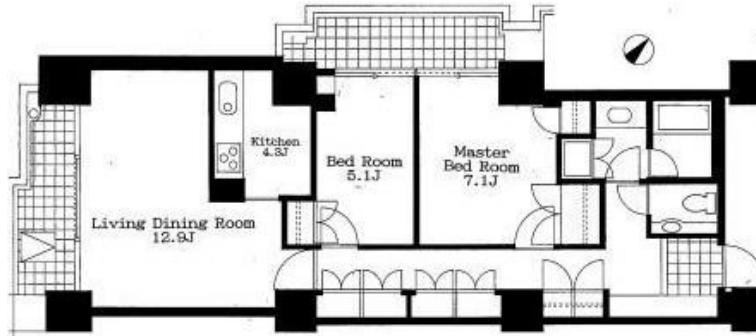


Property Name	ROPPONGI FIRST PLAZA	Unit No.	TYPE	Access	Roppongi Station on Namboku Line (5 min) Kamiyachou Station on Hibiya Line (6 min)
		821	Apt.		
Address	1-9-39, Roppongi, Minato-Ku, Tokyo				

High-rise residence in Roppongi, near Akasaka / Azabujuban



Lease Conditions	
LAYOUT	2LDK
SIZE	75.23 m <sup>2</sup> /809.76 ft <sup>2</sup>
RENT	JPY 547,000 / month
Management Fee	-
Deposit	2 months
Key Money	-
Lease Term	Fixed term lease for 36 months
Available	Negotiable
Renewal Fee	-
Agent Fee	1 month + tax
Other Info	Depreciation : 1 month / No Key Money / Auto lock / Renovated / Fridge / Air-Con / Separated Toilet / Balcony / Penalty Fee for Early Cancellation / Flooring / Washer / Dryer / Oven / Corner Unit

Building Information	
Completion	May, 1993
Earthquake Resistance	New
Structure	RC, SRC, 20 floors above and 1 basement floors
Car Parking	TBC
Bicycle Parking	N/A
Music Instrument	-
Pet	N/A
Facilities	Motorcycle Parking (TBC) / Trunk Room (( Included )) / Gym (TBC) / Within 20 min walk to Roppongi / Within 20 min to Roppongi by train / Near Large Parks / Delivery box / Elevator / Close to Station / High-rise

Remarks
Pet : Negotiable

\*The actual Layout & Size may differ slightly from this floor plans & pictures.



HOUSEREP TOKYO INC.

ハウスレップトーキョー株式会社

#301, 1-4-15, Hiroo, Shibuya-ku, Tokyo 150-0012, Japan

+81 (0)3 6427 5860

inquiry@housserep-tokyo.com

Transaction Type : Intermediate

Agent Fee : 1 month + tax

Website : www.housserep-tokyo.com

