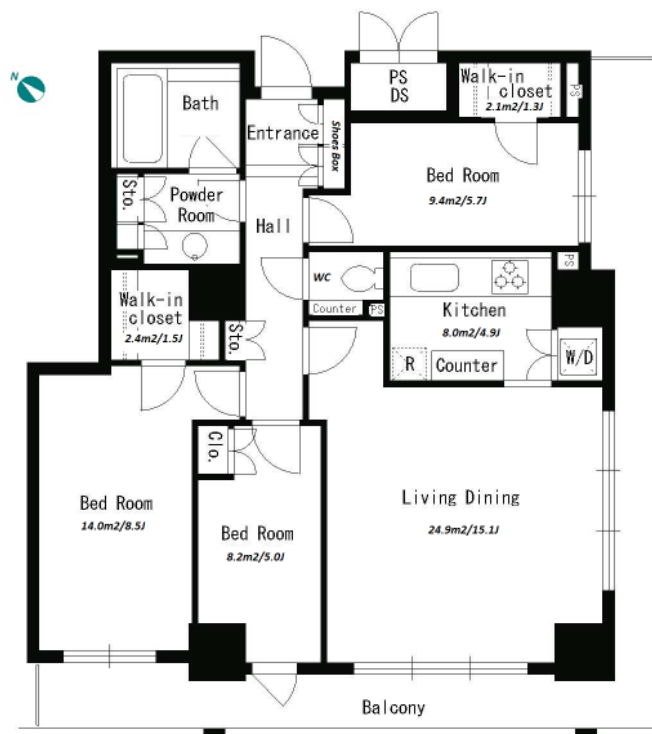
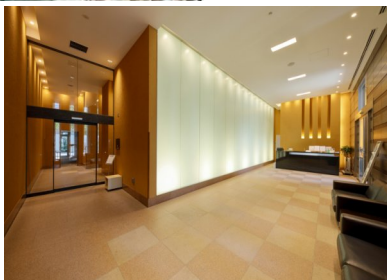


Property Name	PARK TOWER SHIBAURA BAYWARD URBAN WING	Unit No.	TYPE	Access	Shibaurafutou Station on (7 min) Tamachi Station on JR Yamanote Line (8 min) Mita Station on Mita Line (9 min)
		2601	Apt.		
Address	2-6-11, Shibaura, Minato-Ku, Tokyo				

Luxury & Stylish Apartment with a View of Tokyo Bay



Lease Conditions		
LAYOUT	3 BR	
SIZE	86.65 m²/932.69 ft²	
RENT	JPY 435,000 / month	
Management Fee	JPY 15,000/month	
Deposit	2 months	Key Money 1 month
Lease Term	Fixed term lease for 24 months	
Available	Now	
Renewal Fee	-	
Agent Fee	1 month + tax	
Other Info	Guarantor Company : TBC / Auto lock / Air-Con / Separated Toilet / Balcony / Internet (Extra Charge) / Penalty Fee for Early Cancellation / Musical Instrument Negotiable / CS/CATV / Flooring / Floor Heating / Bathroom dryer / WIC / Corner Unit	

Building Information			
Completion	Jul, 2005	Earthquake Resistance	New
Structure	RC, 29 floors above and 1 basement floors		
Car Parking	extra charge		
Bicycle Parking	for 1 space (Included)		
Music Instrument	Negotiable	Pet	Allowed
Facilities	Within 20 min to Tokyo station by car / Near Large Parks / Front desk / Janitor / Delivery box / Elevator / High-rise		

*The actual Layout & Size may differ slightly from this floor plans & pictures.



HOUSEREP TOKYO INC.

ハウズレップトーキョー株式会社

#301, 1-4-15, Hiroo, Shibuya-ku, Tokyo 150-0012, Japan

+81 (0)3 6427 5860

inquiry@housserep-tokyo.com

Transaction Type : Intermediate

Agent Fee : 1 month + tax

Website : www.housserep-tokyo.com



Remarks
Fixed term lease : Re-contract fee : 1 month / Renters Insurance : Required / key replacement: extra charge / Pet: additional deposit (1 month) / Pet : a small dog or up to two cats