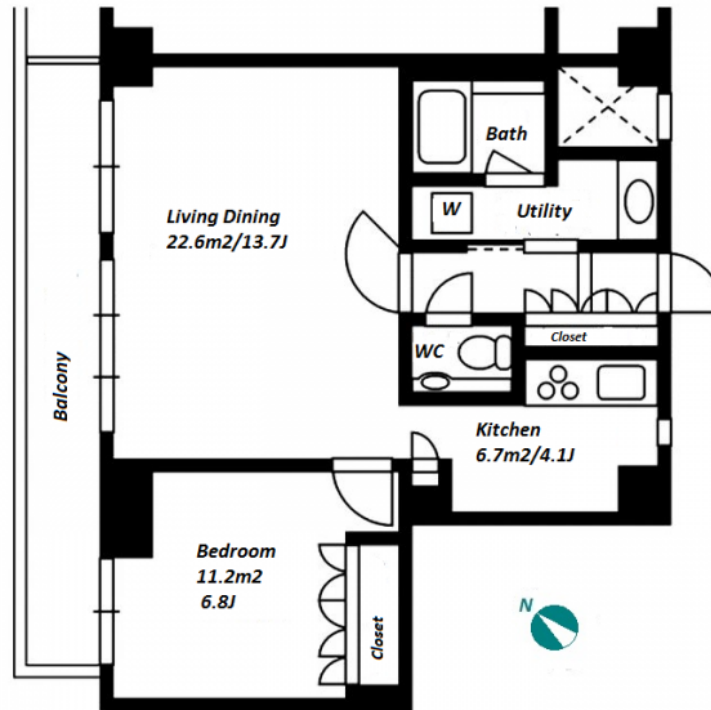


Property Name	URBAN PARK DAIKANYAMA I / II	Unit No.	TYPE	Access	Daikanyama Station on Toyoko Line (7 min) Shibuya Station on JR Yamanote Line (10 min)
		507	Apt.		
Address	9-8, Sarugakucho, Shibuya-Ku, Tokyo				

## Stylish Apartment in Daikanyama / Shibuya / Ebisu



Lease Conditions	
LAYOUT	1 BR
SIZE	55.13 m²/593.41 ft²
RENT	JPY 280,000 / month
Management Fee	JPY10,000/month
Deposit	2 months
Key Money	-
Lease Term	Standard lease for 24 months
Available	Now
Renewal Fee	1 month
Agent Fee	1 month + tax
Other Info	Key Replacement Fee : JPY35,000 Tax not included / Guarantor Company : TBC / No Key Money / Auto lock / Air-Con / Separated Toilet / Balcony / Penalty Fee for Early Cancellation / CS/CATV / Flooring / Bathroom dryer

Building Information			
Completion	Jun, 2006	Earthquake Resistance	New
Structure	RC, 8 floors above		
Car Parking	TBC		
Bicycle Parking	TBC		
Music Instrument	-	Pet	N/A
Facilities	Motorcycle Parking (TBC) / Within 20 min to Roppongi by train / Near Large Parks / Delivery box / Elevator / Security / 24h Garbage Drop-off		

Remarks
Renters Insurance : Required

\*The actual Layout & Size may differ slightly from this floor plans & pictures.



HOUSEREP TOKYO INC.

ハウスレップトーキョー株式会社

#301, 1-4-15, Hiroo, Shibuya-ku, Tokyo 150-0012, Japan

+81 (0)3 6427 5860

inquiry@housserrep-tokyo.com

Transaction Type : Intermediate

Agent Fee : 1 month + tax

Website : www.housserrep-tokyo.com

