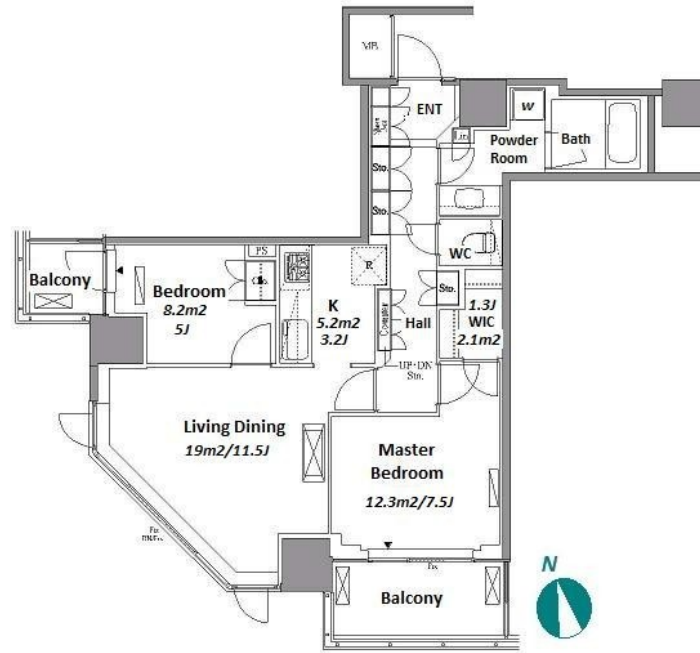


Property Name	RESIDIA TOWER MEGURO FUDOMAE	Unit No.	TYPE	Access	Gotanda Station on JR Yamanote Line (7 min) Fudoumae Station on Tokyu Meguro Line (8 min) Meguro Station on Mita Line (14 min)
		2910	Apt.		
Address	3-7-6, Nishigotanda, Shinagawa-Ku, Tokyo				

Stylish High Rise Apt. in Meguro / Gotanda, near Meguro River



Lease Conditions			
LAYOUT	2 BR		
SIZE	67.42 m ² /725.7 ft ²		
RENT	JPY 335,000 / month		
Management Fee	JPY15,000/month		
Deposit	2 months	Key Money	1 month
Lease Term	Standard lease for 24 months		
Available	Now		
Renewal Fee	1 month		
Agent Fee	1 month + tax		
Other Info	Key Replacement Fee : JPY20,000 Tax not included / Guarantor Company : TBC / Auto lock / Air-Con / Separated Toilet / Balcony / Internet (Extra Charge) / Penalty Fee for Early Cancellation / Musical Instrument Negotiable / Flooring / Floor Heating / Bathroom dryer / WIC		

Building Information			
Completion	Jan, 2007	Earthquake Resistance	New
Structure	RC, 30 story		
Car Parking	TBC		
Bicycle Parking	TBC		
Music Instrument	Negotiable	Pet	Negotiable
Facilities	Motorcycle Parking (TBC) / Trunk Room (TBC) / Gym ((Included)) / Front desk / Janitor / Delivery box / Elevator / Sky lounge		

*The actual Layout & Size may differ slightly from this floor plans & pictures.



HOUSEREP TOKYO INC.

ハウスレップトーキョー株式会社

#301, 1-4-15, Hiroo, Shibuya-ku, Tokyo 150-0012, Japan

+81 (0)3 6427 5860 inquiry@houserep-tokyo.com

Transaction Type : Intermediate

Agent Fee : 1 month + tax

Website : www.houserep-tokyo.com



Remarks
Renters Insurance : Required / Tenant support fee: JPY.10,000+tax/2years Internet fee: JPY.1,500+tax/tax