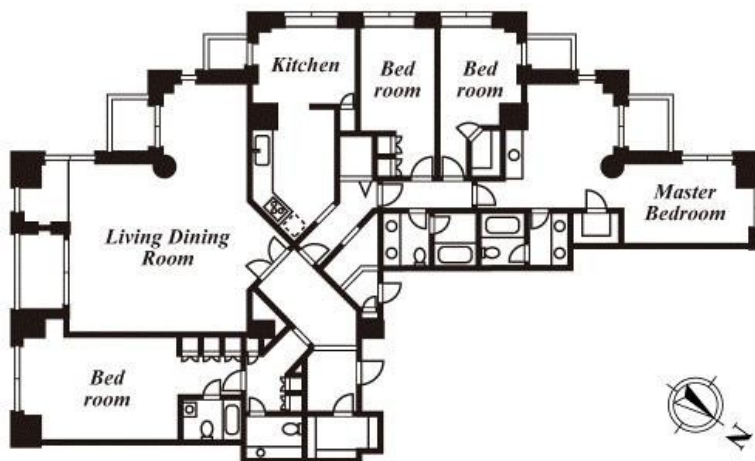
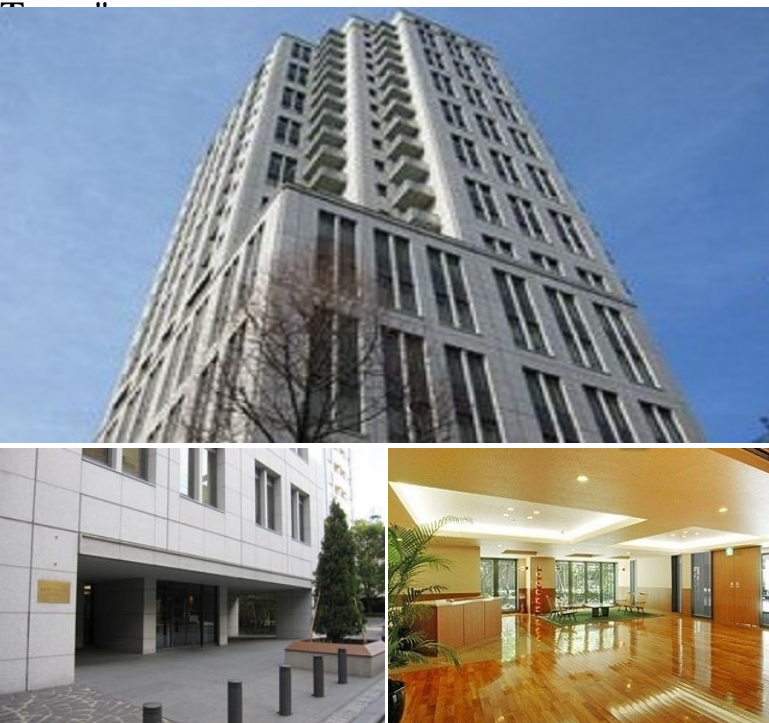


Property Name	AOYAMA DAIICHI MANSIONS	Unit No.	TYPE	Access	Aoyamaicchoume Station on Ginza Line (1 min) Aoyamaicchoume Station on Oedo Line (1 min) Nogizaka Station on Chiyoda Line (7 min)
		2001	Apt.		
Address	8-4-10, Akasaka, Minato-Ku, Tokyo				

High Quality Residence, near the Outer Gardens of Meiji Shrine "Jingu-Gaien" & "Tokyo Mid



Lease Conditions			
LAYOUT	4 BR		
SIZE	296.39 m²/3190.31 ft²		
RENT	JPY 1,700,000 / month		
Management Fee	-		
Deposit	4 months	Key Money	-
Lease Term	Fixed term lease for 24 months		
Available	Now		
Renewal Fee	-		
Agent Fee	1 month + tax		
Other Info	No Key Money / Auto lock / Fridge / Air-Con / Separated Toilet / Balcony / Penalty Fee for Early Cancellation / Washer / Dryer / Oven		

Building Information			
Completion	Sep, 2003	Earthquake Resistance	New
Structure	SRC, 22 story		
Car Parking	JPY45,000 ~ 60,000 + tax / month		
Bicycle Parking	TBC		
Music Instrument	-	Pet	N/A
Facilities	Motorcycle Parking (JPY7,000 + tax / month) / Trunk Room (JPY7,000 ~ 10,000 + tax / month) / Gym (JPY2,000/ month) / Within 20 min walk to Roppongi / Within 20 min to Roppongi by train / Within 20 min to Tokyo station by car / Near Large Parks / Concierge / Delivery box / Elevator / Close to Station / High-rise		

Remarks
Renters Insurance : Required / -Master Bedroom : 44.9m² -Bedroom#1 : 30.4m² -Bedroom#2 : 18m² -Bedroom#3 : 17m² -Living Dining : 66.7m² -Kitchen : 29m² / Hotwater Supply : JPY.29,000+tax / Air-con : JPY.65,000+tax

*The actual Layout & Size may differ slightly from this floor plans & pictures.



HOUSEREP TOKYO INC.

ハウスレップトーキョー株式会社

#301, 1-4-15, Hiroo, Shibuya-ku, Tokyo 150-0012, Japan

+81 (0)3 6427 5860

inquiry@housserrep-tokyo.com

Transaction Type : Intermediate

Agent Fee : 1 month + tax

Website : www.housserrep-tokyo.com

