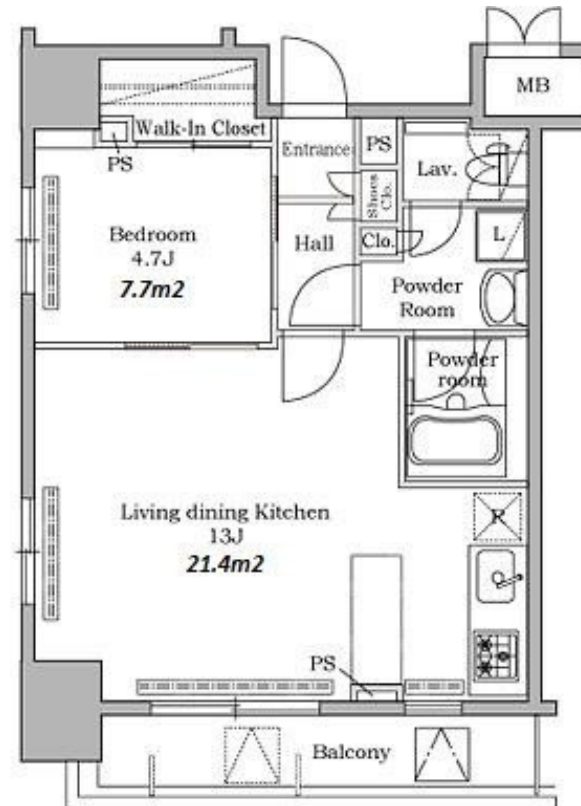


| | | | | | |
|---------------|-----------------------------------|----------|------|--------|--|
| Property Name | RESIDIA HIROO II | Unit No. | TYPE | Access | Hiroo Station on Hibiya Line (7 min) Ebisu Station on JR Yamanote Line (12 min) |
| | | 901 | Apt. | | |
| Address | 5-19-17, Hiroo, Shibuya-Ku, Tokyo | | | | |

Cozy Studio in Hiroo / Ebisu



| Lease Conditions | |
|------------------|--|
| LAYOUT | 1 BR |
| SIZE | 42.64 m²/458.97 ft² |
| RENT | JPY 255,000 / month |
| Management Fee | JPY15,000/month |
| Deposit | 2 months |
| Key Money | - |
| Lease Term | Standard lease for 24 months |
| Available | Now |
| Renewal Fee | 1 month |
| Agent Fee | 1 month + tax |
| Other Info | Key Replacement Fee : JPY18,000 Tax not included / Guarantor Company : TBC / No Key Money / Auto lock / Renovated / Air-Con / Separated Toilet / Balcony / Internet (Extra Charge) / Penalty Fee for Early Cancellation / Flooring |

| Building Information | | | |
|----------------------|--|-----------------------|---------|
| Completion | Nov, 2005 | Earthquake Resistance | New |
| Structure | SRC, 12 floors above | | |
| Car Parking | JPY50,000 + tax / month | | |
| Bicycle Parking | N/A | | |
| Music Instrument | - | Pet | Allowed |
| Facilities | Within 20 min to Roppongi by train / Near Large Parks / Delivery box / Elevator / Security | | |

| Remarks |
|--|
| Renters Insurance : Required / Tenant support fee: JPY.10,000+tax/2years Wi-Fi: JPY.2,000+tax/month / Parking : 1 month for deposit / Pet:additional deposit (1 month) / Pet : a small dog or a cat |

*The actual Layout & Size may differ slightly from this floor plans & pictures.



HOUSEREP TOKYO INC.

ハウスレップトーキョー株式会社

#301, 1-4-15, Hiroo, Shibuya-ku, Tokyo 150-0012, Japan

+81 (0)3 6427 5860

inquiry@housserrep-tokyo.com

Transaction Type : Intermediate

Agent Fee : 1 month + tax

Website : www.housserrep-tokyo.com

