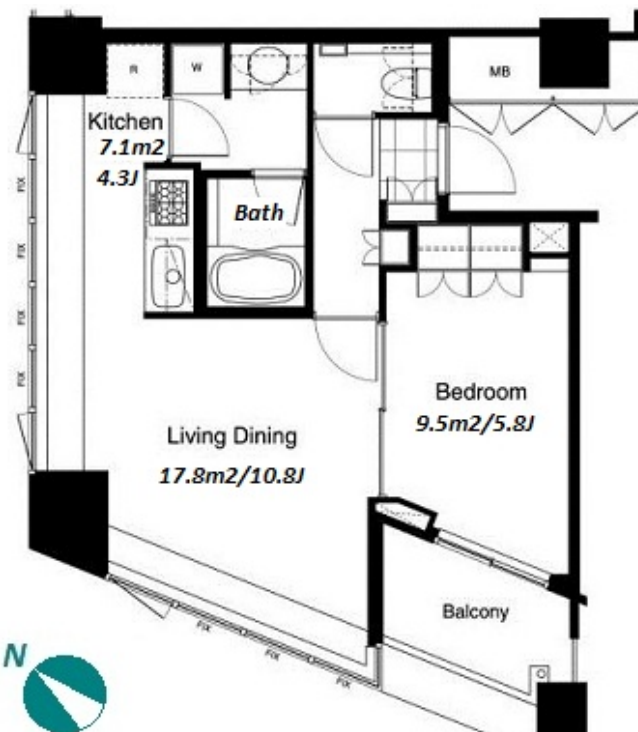
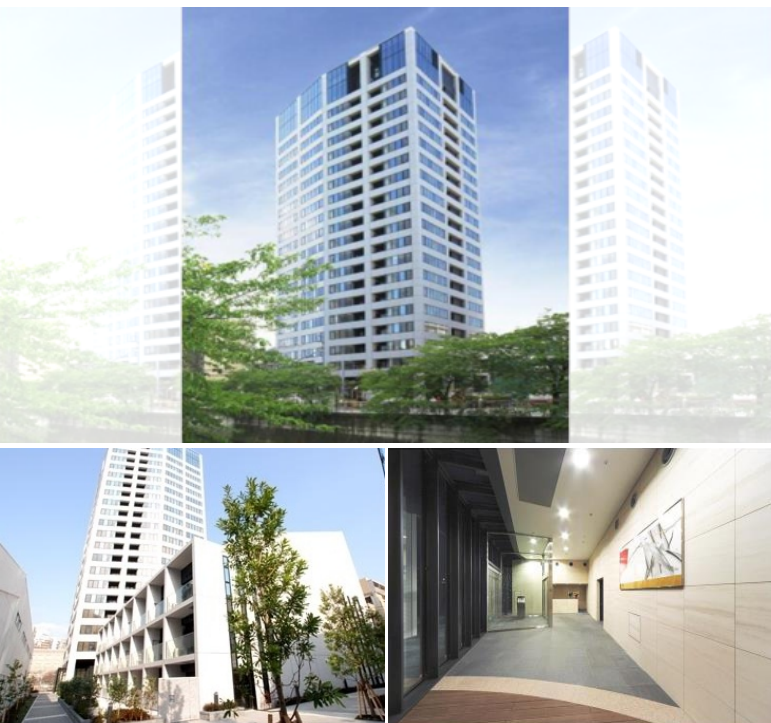


Property Name	PARK CUBE MEGURO TOWER	Unit No.	TYPE	Access	Meguro Station on JR Yamanote Line (6 min) Meguro Station on Namboku Line (6 min) Meguro Station on Mita Line (6 min)
		409	Apt.		
Address	2-2-2, Shimomeguro, Meguro-Ku, Tokyo				

## Stylish High-rise Apt. along Meguro River



\*The actual Layout & Size may differ slightly from this floor plans & pictures.

Lease Conditions			
LAYOUT	1 BR		
SIZE	47.71 m <sup>2</sup> /513.54 ft <sup>2</sup>		
RENT	JPY 250,000 / month		
Management Fee	-		
Deposit	2 months	Key Money	-
Lease Term	Standard lease for 24 months		
Available	End, Jul, 2024		
Renewal Fee	1 month		
Agent Fee	1 month + tax		
Other Info	Key Replacement Fee : JPY15,000 Tax not included / Guarantor Company : TBC / No Key Money / Auto lock / Air-Con / Separated Toilet / Balcony / Internet Included / Penalty Fee for Early Cancellation / Flooring / Bathroom dryer		
Building Information			
Completion	Feb, 2008	Earthquake Resistance	New
Structure	RC, 22 floors above and 2 basement floors		
Car Parking	JPY40,000 + tax / month		
Bicycle Parking	for 1 space ( Included )		
Music Instrument	-	Pet	N/A
Facilities	Motorcycle Parking (TBC) / Gym (( Included )) / Within 20 min to Roppongi by train / Near Large Parks / Front desk / Janitor / Delivery box / Elevator / Security / High-rise		

Remarks	
Renters Insurance : Required / Bicycle parking : Registration sticker fee: JPY.2,000+tax	



HOUSEREP TOKYO INC.

ハウスレップトーキョー株式会社

#301, 1-4-15, Hiroo, Shibuya-ku, Tokyo 150-0012, Japan

+81 (0)3 6427 5860

inquiry@housserrep-tokyo.com

Transaction Type : Intermediate

Agent Fee : 1 month + tax

Website : www.housserrep-tokyo.com

