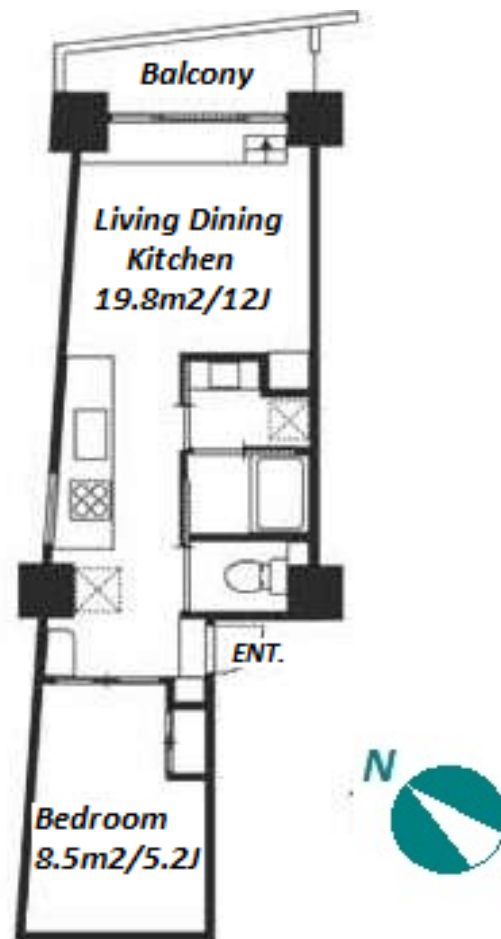


Property Name	RESIDIA MEGURO III	Unit No.	TYPE	Access	Meguro Station on Namboku Line (12 min) Meguro Station on JR Yamanote Line (13 min) Nakameguro Station on Hibiya Line (16 min)
		402	Apt.		
Address	2-12-16, Meguro, Meguro-Ku, Tokyo				

Stylish Apartment in Meguro, near "Meguro River"



*The actual Layout & Size may differ slightly from this floor plans & pictures.

Lease Conditions	
LAYOUT	1 BR
SIZE	40.11 m ² /431.74 ft ²
RENT	JPY 210,000 / month
Management Fee	JPY 15,000/month
Deposit	2 months
Key Money	1 month
Lease Term	Standard lease for 24 months
Available	Early, Nov, 2024
Renewal Fee	1 month
Agent Fee	1 month + tax
Other Info	Key Replacement Fee : JPY30,000 Tax not included / Guarantor Company : TBC / Auto lock / Air-Con / Separated Toilet / Balcony / Internet (Extra Charge) / Penalty Fee for Early Cancellation / Bathroom dryer / Corner Unit

Building Information	
Completion	Jan, 2010
Earthquake Resistance	New
Structure	SRC, 10 floors above
Car Parking	TBC
Bicycle Parking	N/A
Music Instrument	-
Pet	Allowed
Facilities	Motorcycle Parking (TBC) / Delivery box

Remarks
Renters Insurance : Required / Tenant membership fee: JPY.10,000+tax/2years Internet Access: JPY.1,500+tax/month (regardless of usage) / Pet:additional deposit (1 month) / Pet : a small dog or a cat



HOUSEREP TOKYO INC.

ハウズレップトーキョー株式会社

#301, 1-4-15, Hiroo, Shibuya-ku, Tokyo 150-0012, Japan

+81 (0)3 6427 5860

inquiry@housserrep-tokyo.com

Transaction Type : Intermediate

Agent Fee : 1 month + tax

Website : www.housserrep-tokyo.com

