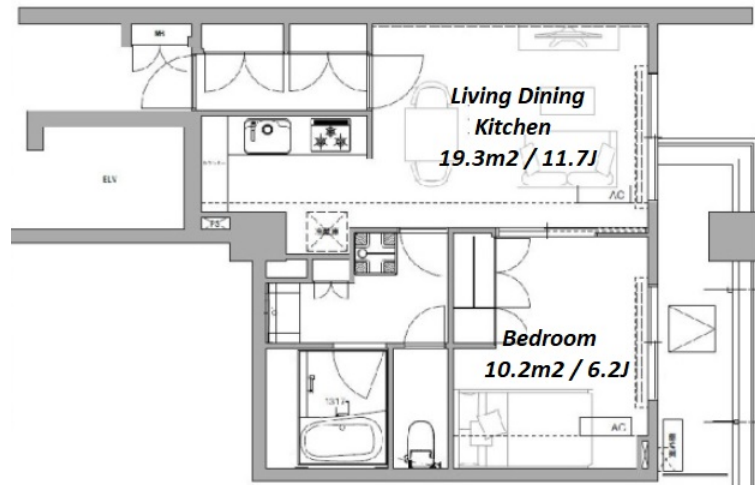


Property Name	FRONTIER TERRACE MEGURO	Unit No.	TYPE	Access	Meguro Station on JR Yamanote Line (4 min) Meguro Station on Namboku Line (4 min)
		205	Apt.		
Address	1-4-4, Shimomeguro, Meguro-Ku, Tokyo				

Stylish Apartment in Meguro, near "Meguro River"



Lease Conditions			
LAYOUT	1 BR		
SIZE	44.35 m²/477.37 ft²		
RENT	JPY 244,000 / month		
Management Fee	JPY15,000/month		
Deposit	-	Key Money	-
Lease Term	Standard lease for 24 months		
Available	Now		
Renewal Fee	1 month		
Agent Fee	1 month + tax		
Other Info	Key Replacement Fee : JPY25,000 Tax not included / No Key Money / Free rent / Auto lock / Renovated / Air-Con / Separated Toilet / Balcony / Internet Included / Penalty Fee for Early Cancellation / Flooring / Bathroom dryer		
Building Information			
Completion	Nov, 2002	Earthquake Resistance	New
Structure	RC, 6 floors above		
Car Parking	JPY34,650 + tax / month		
Bicycle Parking	N/A		
Music Instrument	-	Pet	-
Facilities	Motorcycle Parking (TBC) / Gym ((Included)) / Delivery box / Elevator / 24h Garbage Drop-off / Fitness / Gym		

*The actual Layout & Size may differ slightly from this floor plans & pictures.



HOUSEREP TOKYO INC.
ハウスレップトキョー株式会社

#301, 1-4-15, Hiroo, Shibuya-ku, Tokyo 150-0012, Japan
+81 (0)3 6427 5860 inquiry@housserrep-tokyo.com

Transaction Type : Intermediate
Agent Fee : 1 month + tax

Website : www.housserrep-tokyo.com



Remarks
Renters Insurance : Required / Pest control service fee: 15,000yen+tax Tenancy support service fee: 15,000yen+tax/2 years Room cleaning fee (upon moving out): 79,500yen+tax