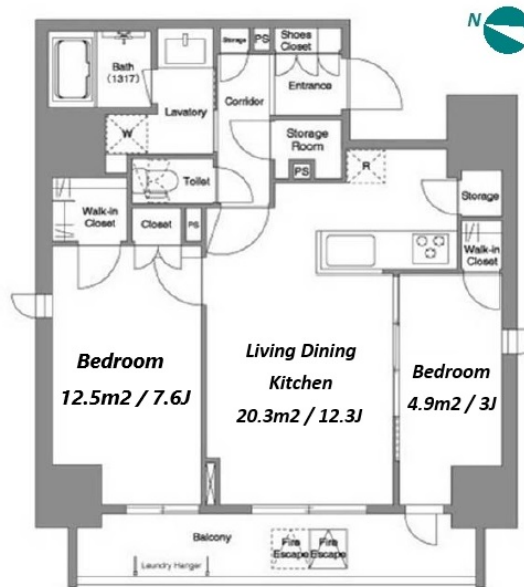
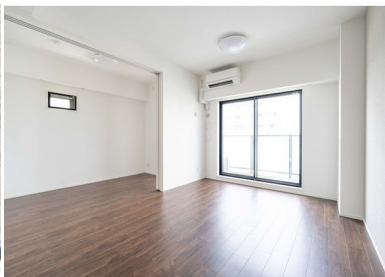
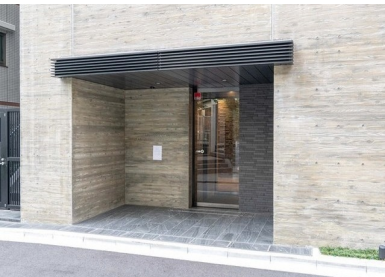


Property Name	COMFORIA ITABASHI KUYAKUSHOMAE	Unit No.	TYPE	Access	Itabashikuyakushomae Station on Mita Line (5 min) Ooyama Station on (14 min)
		1002	Apt.		
Address	57-9, Nakajuku, Itabashi-Ku, Tokyo				



Lease Conditions

LAYOUT	2 BR	
SIZE	59.33 m²/638.62 ft²	
RENT	JPY 235,000 / month	
Management Fee	JPY15,000/month	
Deposit	2 months	Key Money -
Lease Term	Standard lease for 24 months	
Available	Early, Oct, 2024	
Renewal Fee	1 month	
Agent Fee	1 month + tax	
Other Info	Key Replacement Fee : JPY20,000 Tax not included / No Key Money / Auto lock / Separated Toilet / Balcony / Internet Included / Penalty Fee for Early Cancellation / Flooring / Bathroom dryer / WIC / Corner Unit	

Building Information

Completion	Dec, 2022	Earthquake Resistance	New
Structure	RC, 13 floors above		
Car Parking	-		
Bicycle Parking	JPY500 + tax / month		
Music Instrument	-	Pet	N/A
Facilities	French Community / Janitor / Delivery box / Elevator / 24h Garbage Drop-off / Newly-built (~7 y/o)		

Remarks

Renters Insurance : Required

*The actual Layout & Size may differ slightly from this floor plans & pictures.



HOUSEREP TOKYO INC.

ハウスレップトーキョー株式会社

#301, 1-4-15, Hiroo, Shibuya-ku, Tokyo 150-0012, Japan

+81 (0)3 6427 5860

inquiry@housserrep-tokyo.com

Transaction Type : Intermediate

Agent Fee : 1 month + tax

Website : www.housserrep-tokyo.com

