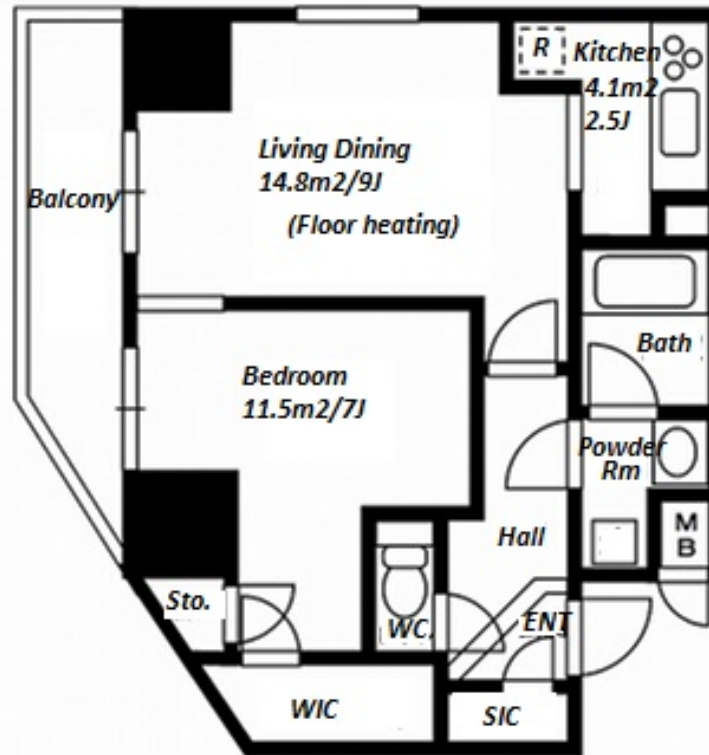


Property Name	RESIDIA MACHIYA	Unit No.	TYPE	Access	Machiya Station on Keisei Main Line (11 min) Machiya Station on Chiyoda Line (12 min)
		803	Apt.		
Address	6-1-15, Machiya, Arakawa-Ku, Tokyo				

Cozy Mid Rise Apt. near "Machiya" stn.



Lease Conditions

LAYOUT	1 BR		
SIZE	44.53 m²/479.31 ft²		
RENT	JPY 140,000 / month		
Management Fee	JPY15,000/month		
Deposit	2 months	Key Money	1 month
Lease Term	Standard lease for 24 months		
Available	Mid, Nov, 2024		
Renewal Fee	1 month		
Agent Fee	1 month + tax		
Other Info	Key Replacement Fee : JPY18,000 Tax not included / Guarantor Company : TBC / Auto lock / Air-Con / Separated Toilet / Penalty Fee for Early Cancellation / Flooring / Floor Heating / Bathroom dryer / WIC		

Building Information

Completion	Aug, 2009	Earthquake Resistance	New
Structure	RC, 15 floors above		
Car Parking	N/A		
Bicycle Parking	-		
Music Instrument	-	Pet	N/A
Facilities	Delivery box / Elevator		

Remarks

Renters Insurance : Required / Tenant support fee:
JPY.10,000+tax/2years

*The actual Layout & Size may differ slightly from this floor plans & pictures.



HOUSEREP TOKYO INC.

ハウスレップトーキョー株式会社

#301, 1-4-15, Hiroo, Shibuya-ku, Tokyo 150-0012, Japan

+81 (0)3 6427 5860

inquiry@housserep-tokyo.com

Transaction Type : Intermediate

Agent Fee : 1 month + tax

Website : www.housserep-tokyo.com

