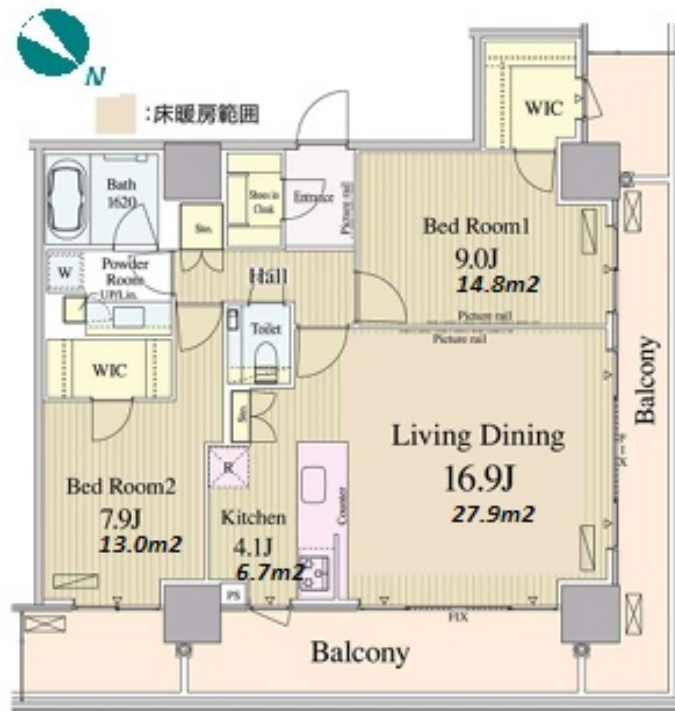


Property Name	LUMILACE TOYOSU	Unit No.	TYPE	Access	Toyosu Station on Yurakucho Line (2 min)
		1704	Apt.		
Address	5-5-18, Toyosu, Koto-Ku, Tokyo				

Stylish Mid-rise Apt. in Toyosu



Lease Conditions	
LAYOUT	2 BR
SIZE	87.46 m²/941.41 ft²
RENT	JPY 382,000 / month
Management Fee	JPY15,000/month
Deposit	2 months
Key Money	2 months
Lease Term	Standard lease for 24 months
Available	End, Oct, 2024
Renewal Fee	1 month
Agent Fee	1 month + tax
Other Info	Key Replacement Fee : JPY20,000 Tax not included / Guarantor Company : TBC / Auto lock / Air-Con / Separated Toilet / Balcony / Internet (Extra Charge) / Flooring / Floor Heating / Bathroom dryer / WIC

Building Information	
Completion	Jan, 2016
Earthquake Resistance	New
Structure	RC, 17 floors above
Car Parking	N/A
Bicycle Parking	for 1 space (Included)
Music Instrument	-
Pet	-
Facilities	Motorcycle Parking (TBC) / Near Large Parks / Front desk / Concierge / Delivery box / Elevator

Remarks
Renters Insurance : Required

*The actual Layout & Size may differ slightly from this floor plans & pictures.



HOUSEREP TOKYO INC.

ハウスレップトーキョー株式会社

#301, 1-4-15, Hiroo, Shibuya-ku, Tokyo 150-0012, Japan

+81 (0)3 6427 5860

inquiry@housserrep-tokyo.com

Transaction Type : Intermediate

Agent Fee : 1 month + tax

Website : www.housserrep-tokyo.com

