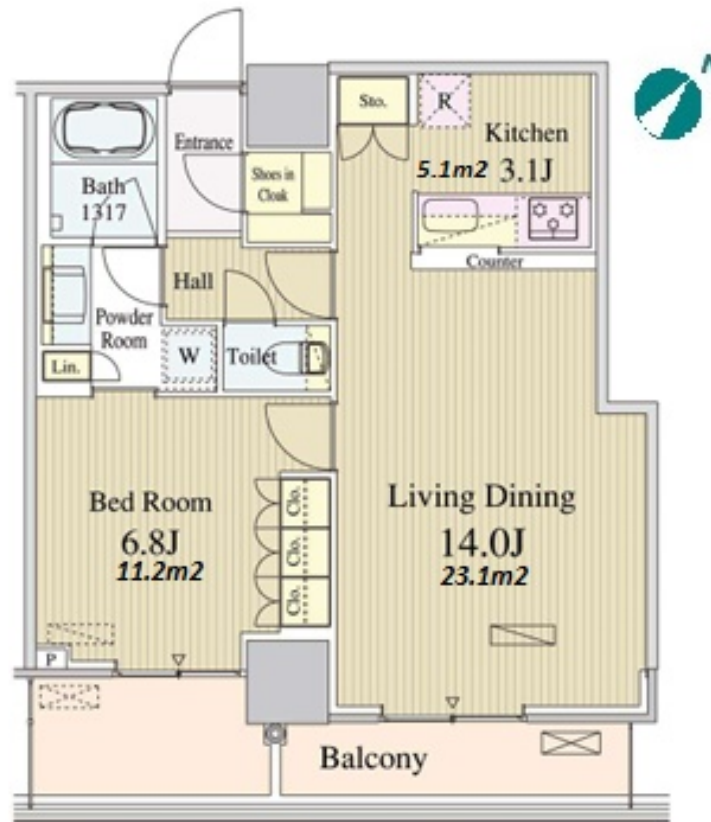


Property Name	LUMILACE TOYOSU	Unit No.	TYPE	Access	Toyosu Station on Yurakucho Line (2 min)
		1509	Apt.		
Address	5-5-18, Toyosu, Koto-Ku, Tokyo				

Stylish Mid-rise Apt. in Toyosu



Lease Conditions			
LAYOUT	1 BR		
SIZE	55.55 m ² /597.93 ft ²		
RENT	JPY 245,000 / month		
Management Fee	JPY15,000/month		
Deposit	2 months	Key Money	2 months
Lease Term	Standard lease for 24 months		
Available	End, Nov, 2024		
Renewal Fee	1 month		
Agent Fee	1 month + tax		
Other Info	Key Replacement Fee : JPY20,000 Tax not included / Guarantor Company : TBC / Auto lock / Air-Con / Separated Toilet / Balcony / Internet (Extra Charge) / Flooring / Bathroom dryer		

Building Information			
Completion	Jan, 2016	Earthquake Resistance	New
Structure	RC, 17 floors above		
Car Parking	N/A		
Bicycle Parking	for 1 space (Included)		
Music Instrument	-	Pet	-
Facilities	Motorcycle Parking (TBC) / Near Large Parks / Front desk / Concierge / Delivery box / Elevator		

Remarks	
Renters Insurance : Required	

*The actual Layout & Size may differ slightly from this floor plans & pictures.



HOUSEREP TOKYO INC.

ハウスレップトーキョー株式会社

#301, 1-4-15, Hiroo, Shibuya-ku, Tokyo 150-0012, Japan

+81 (0)3 6427 5860

inquiry@housserrep-tokyo.com

Transaction Type : Intermediate

Agent Fee : 1 month + tax

Website : www.housserrep-tokyo.com

