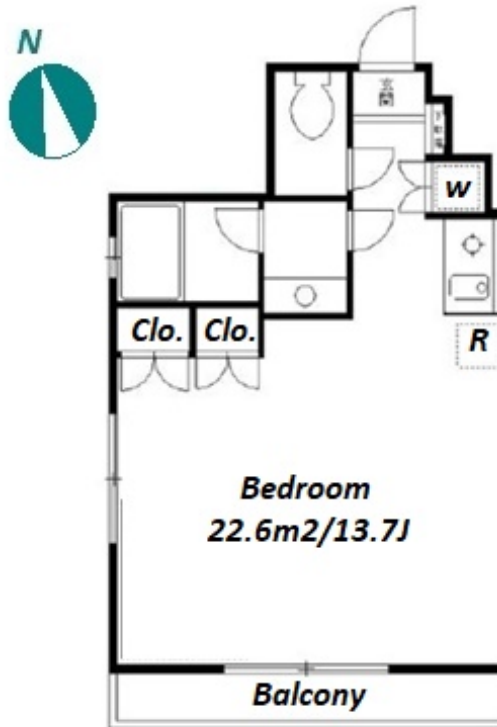


Property Name	AZABU EAST COURT	Unit No.	TYPE	Access	Akabanebashi Station on Oedo Line (5 min) Azabujuban Station on Namboku Line (6 min)
		404	Apt.		
Address	2-22-5, Higashiazabu, Minato-Ku, Tokyo				



Lease Conditions			
LAYOUT	1 Room		
SIZE	33.12 m²/356.5 ft²		
RENT	JPY 124,000 / month		
Management Fee	JPY5,000/month		
Deposit	1 month	Key Money	2 months
Lease Term	Standard lease for 24 months		
Available	Mid, Dec, 2024		
Renewal Fee	1 month		
Agent Fee	1 month + tax		
Other Info	Key Replacement Fee : JPY25,000 Tax not included / Auto lock / Air-Con / Separated Toilet / Balcony / Internet (Extra Charge) / Flooring / Corner Unit		

Building Information			
Completion	Mar, 2002	Earthquake Resistance	New
Structure	RC, 5 floors above		
Car Parking	-		
Bicycle Parking	for 1 space (Included)		
Music Instrument	-	Pet	-
Facilities	Elevator / Close to Station / Low-rise		

Remarks
Renters Insurance : Required

*The actual Layout & Size may differ slightly from this floor plans & pictures.



HOUSEREP TOKYO INC.

ハウズレップトーキョー株式会社

#301, 1-4-15, Hiroo, Shibuya-ku, Tokyo 150-0012, Japan

+81 (0)3 6427 5860

inquiry@housserep-tokyo.com

Transaction Type : Intermediate

Agent Fee : 1 month + tax

Website : www.housserep-tokyo.com

