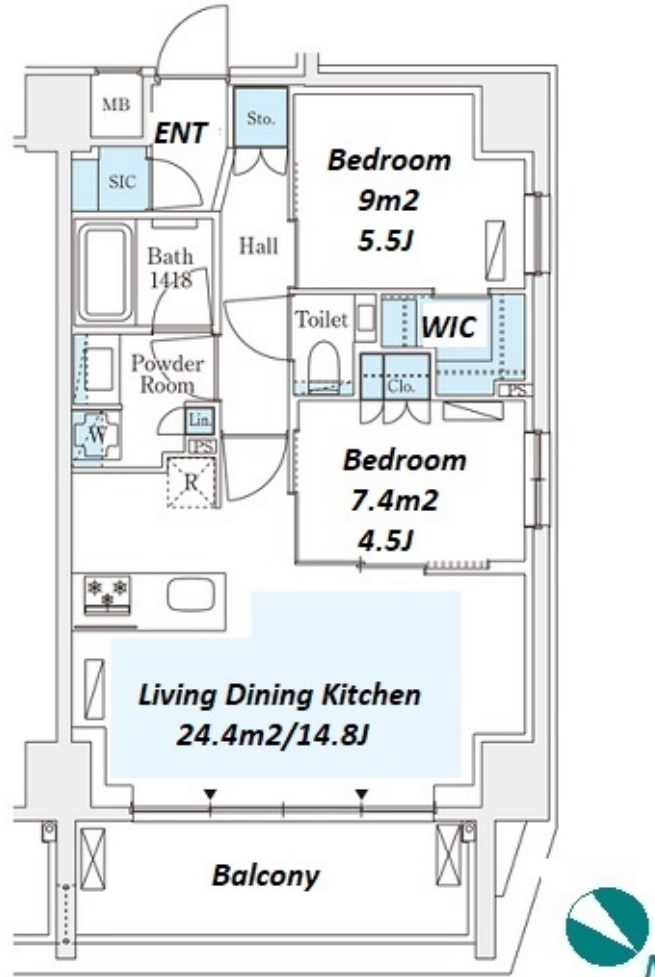


Property Name	GRANPASEO NISHIAZABU II	Unit No.	TYPE	Access	Nogizaka Station on Chiyoda Line (10 min) Omotesandou Station on Ginza Line (11 min)
		702	Apt.		
Address	2-7-4, Nishiazabu, Minato-Ku, Tokyo				



*The actual Layout & Size may differ slightly from this floor plans & pictures.

Lease Conditions			
LAYOUT	2 BR		
SIZE	58.34 m²/627.96 ft²		
RENT	JPY 408,000 / month		
Management Fee	JPY20,000/month		
Deposit	1 month	Key Money	-
Lease Term	Standard lease for 24 months		
Available	Now		
Renewal Fee	1 month		
Agent Fee	1 month + tax		
Other Info	Guarantor Company : TBC / Auto lock / Air-Con / Separated Toilet / Balcony / Penalty Fee for Early Cancellation / Flooring / Floor Heating / Dishwasher / Bathroom dryer / WIC		
Building Information			
Completion	Jun, 2024	Earthquake Resistance	New
Structure	RC, 10 floors above		
Car Parking	extra charge		
Bicycle Parking	-		
Music Instrument	-	Pet	Negotiable
Facilities	Motorcycle Parking (extra charge) / Janitor / Delivery box / Elevator / Newly-built (~1 y/o)		

Remarks	
Renters Insurance : Required	



HOUSEREP TOKYO INC.

ハウスレップトーキョー株式会社

#301, 1-4-15, Hiroo, Shibuya-ku, Tokyo 150-0012, Japan

+81 (0)3 6427 5860

inquiry@housserrep-tokyo.com

Transaction Type : Intermediate

Agent Fee : 1 month + tax

Website : www.housserrep-tokyo.com

