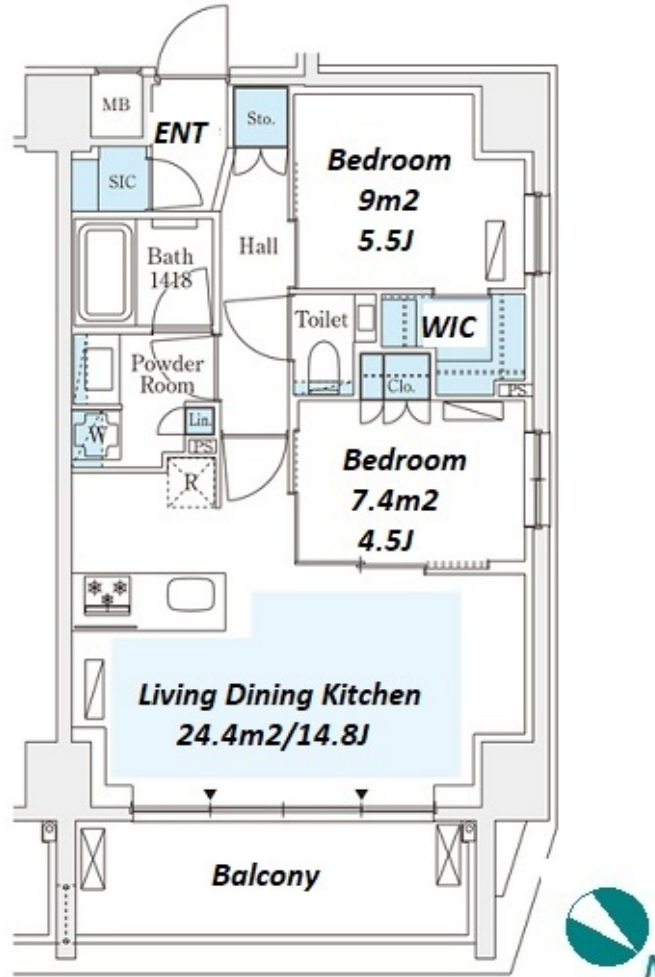


| | | | | | |
|---------------|-------------------------------------|----------|------|--------|---|
| Property Name | GRANPASEO NISHIAZABU II | Unit No. | TYPE | Access | Nogizaka Station on Chiyoda Line (10 min) Omotesandou Station on Ginza Line (11 min) |
| | | 602 | Apt. | | |
| Address | 2-7-4, Nishiazabu, Minato-Ku, Tokyo | | | | |



*The actual Layout & Size may differ slightly from this floor plans & pictures.

| Lease Conditions | | | |
|----------------------|--|-----------------------|------------|
| LAYOUT | 2 BR | | |
| SIZE | 58.34 m²/627.96 ft² | | |
| RENT | JPY 406,000 / month | | |
| Management Fee | JPY20,000/month | | |
| Deposit | 1 month | Key Money | - |
| Lease Term | Standard lease for 24 months | | |
| Available | Now | | |
| Renewal Fee | 1 month | | |
| Agent Fee | 1 month + tax | | |
| Other Info | Guarantor Company : TBC / Auto lock / Air-Con / Separated Toilet / Balcony / Penalty Fee for Early Cancellation / Flooring / Floor Heating / Dishwasher / Bathroom dryer / WIC | | |
| Building Information | | | |
| Completion | Jun, 2024 | Earthquake Resistance | New |
| Structure | RC, 10 floors above | | |
| Car Parking | extra charge | | |
| Bicycle Parking | - | | |
| Music Instrument | - | Pet | Negotiable |
| Facilities | Motorcycle Parking (extra charge) / Janitor / Delivery box / Elevator / Newly-built (~1 y/o) | | |

| Remarks | |
|------------------------------|--|
| Renters Insurance : Required | |



HOUSEREP TOKYO INC.

ハウスレップトーキョー株式会社

#301, 1-4-15, Hiroo, Shibuya-ku, Tokyo 150-0012, Japan

+81 (0)3 6427 5860

inquiry@housserrep-tokyo.com

Transaction Type : Intermediate

Agent Fee : 1 month + tax

Website : www.housserrep-tokyo.com

