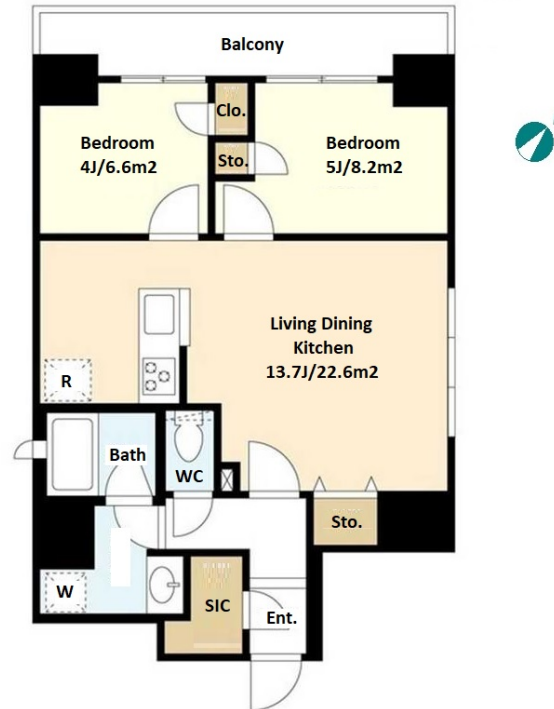


Property Name	LIBARE ASAKUSA KOMAGATA	Unit No.	TYPE	Access	Asakusa Station on Toei Asakusa Line (2 min) Asakusa Station on Ginza Line (4 min)
		1102	Apt.		
Address	2-6-10, Komagata, Taito-Ku, Tokyo				

New Middle Rise Apt. in Komagata, Cozy River Side



Lease Conditions	
LAYOUT	2 BR
SIZE	54.26 m ² /584.04 ft ²
RENT	JPY 285,000 / month
Management Fee	JPY10,000/month
Deposit	1 month
Key Money	-
Lease Term	Standard lease for 24 months
Available	Now
Renewal Fee	1 month
Agent Fee	1 month + tax
Other Info	Key Replacement Fee : JPY30,000 Tax not included / Guarantor Company : TBC / No Key Money / Auto lock / Air-Con / Separated Toilet / Balcony / Internet Included / Flooring / Floor Heating

Building Information	
Completion	May, 2020
Earthquake Resistance	New
Structure	RC, 11 floors above
Car Parking	TBC
Bicycle Parking	for 1 space (Included)
Music Instrument	-
Pet	Negotiable
Facilities	Within 20 min to Tokyo station by car / Delivery box / Elevator

Remarks
Renters Insurance : Required / Pet: additional 1 month deposit

*The actual Layout & Size may differ slightly from this floor plans & pictures.



HOUSEREP TOKYO INC.

ハウスレップトーキョー株式会社

#301, 1-4-15, Hiroo, Shibuya-ku, Tokyo 150-0012, Japan

+81 (0)3 6427 5860

inquiry@housserrep-tokyo.com

Transaction Type : Intermediate

Agent Fee : 1 month + tax

Website : www.housserrep-tokyo.com

