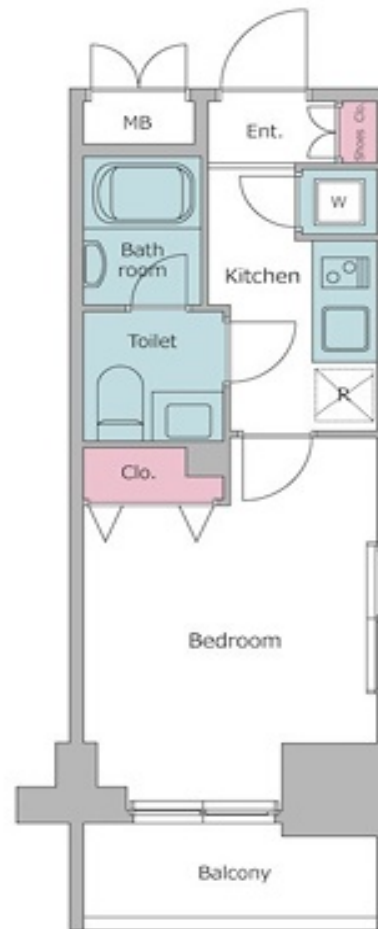
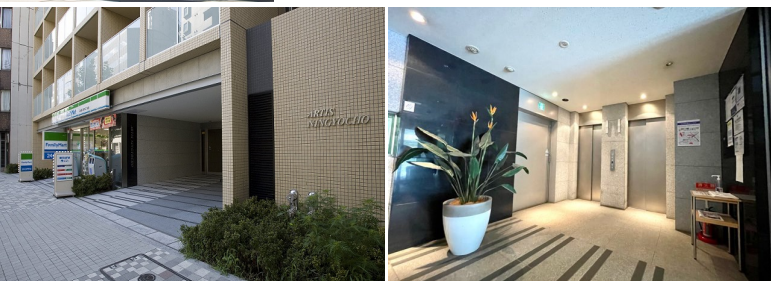


Property Name	RESIDIA NIHOMBASHI	Unit No.	TYPE	Access	Ninngyouchou Station on Hibiya Line (1 min) Ninngyouchou Station on Toei Asakusa Line (1 min)
	NINGYOCHO II	1311	Apt.		
Address	3-4-15, Nihombashinginyocho, Chuo-Ku, Tokyo				

Mid-rise apt. in Ningyocho area



Lease Conditions		
LAYOUT	Studio	
SIZE	20.03 m <sup>2</sup> /215.6 ft <sup>2</sup>	
RENT	JPY 130,000 / month	
Management Fee	JPY10,000/month	
Deposit	2 months	Key Money -
Lease Term	Standard lease for 24 months	
Available	Early, Dec, 2024	
Renewal Fee	1 month	
Agent Fee	1 month + tax	
Other Info	Key Replacement Fee : JPY18,000 Tax not included / Guarantor Company : TBC / No Key Money / Auto lock / Air-Con / Separated Toilet / Balcony / Internet (Extra Charge) / Penalty Fee for Early Cancellation / Flooring / IH Stoves / Bathroom dryer	

Building Information			
Completion	Jan, 2007	Earthquake Resistance	New
Structure	RC, 14 floors above		
Car Parking	N/A		
Bicycle Parking	N/A		
Music Instrument	-	Pet	N/A
Facilities	Delivery box / Elevator		

\*The actual Layout & Size may differ slightly from this floor plans & pictures.



HOUSEREP TOKYO INC.

ハウスレップトーキョー株式会社

#301, 1-4-15, Hiroo, Shibuya-ku, Tokyo 150-0012, Japan

+81 (0)3 6427 5860 inquiry@housserrep-tokyo.com

Transaction Type : Intermediate

Agent Fee : 1 month + tax

Website : www.housserrep-tokyo.com



Remarks	
Renters Insurance	: Required / Tenant support fee:
JPY.10,000+tax/2years	
Internet fee:	JPY.1,500+tax/month