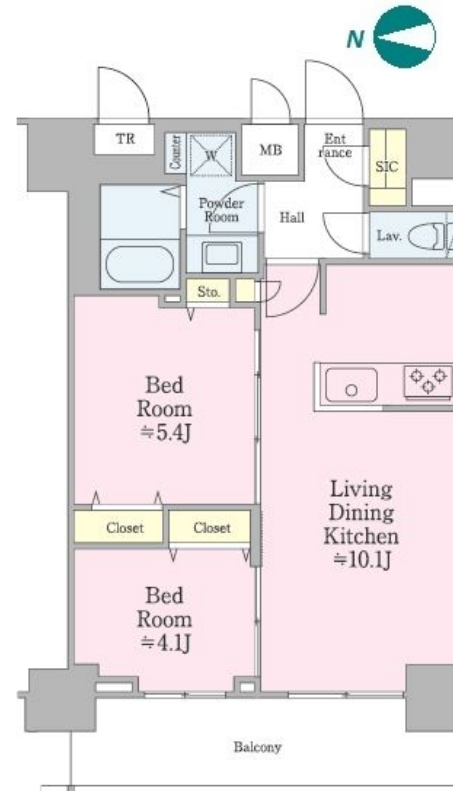
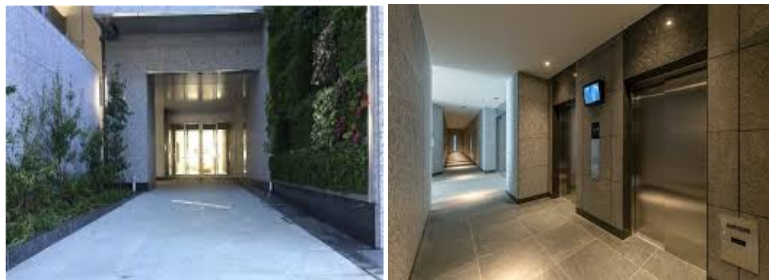


Property Name	CROSS RESIDENCE IIDABASHI	Unit No.	TYPE	Access	Iidabashi Station on JR Chuo Line Rapid Service (4 min) Iidabashi Station on JR Chuo Line Rapid Service (5 min)
		1101	Apt.		
Address	1-16, Shinogawamachi, Shinjuku-Ku, Tokyo				

Stylish High Rise Apt. in Shinjuku, near Iidabashi stn.



Lease Conditions

LAYOUT	2 BR		
SIZE	53.04 m ² /570.91 ft ²		
RENT	JPY 294,000 / month		
Management Fee	JPY15,000/month		
Deposit	2 months	Key Money	-
Lease Term	Standard lease for 24 months		
Available	Negotiable		
Renewal Fee	1 month		
Agent Fee	1 month + tax		
Other Info	Key Replacement Fee : JPY29,000 Tax not included / Guarantor Company : TBC / No Key Money / Auto lock / Air-Con / Separated Toilet / Balcony / Penalty Fee for Early Cancellation / Bathroom dryer		

Building Information

Completion	Jan, 2019	Earthquake Resistance	New
Structure	RC, 13 floors above		
Car Parking	N/A		
Bicycle Parking	TBC		
Music Instrument	-	Pet	Allowed
Facilities	Motorcycle Parking (JPY3,000 + tax / month) / Near Large Parks / Janitor / Delivery box / Elevator		

Remarks

Pet:additional deposit (1 month) / Pet : a small dog or a cat

*The actual Layout & Size may differ slightly from this floor plans & pictures.



HOUSEREP TOKYO INC.

ハウズレップトーキョー株式会社

#301, 1-4-15, Hiroo, Shibuya-ku, Tokyo 150-0012, Japan

+81 (0)3 6427 5860

inquiry@housserrep-tokyo.com

Transaction Type : Intermediate

Agent Fee : 1 month + tax

Website : www.housserrep-tokyo.com

