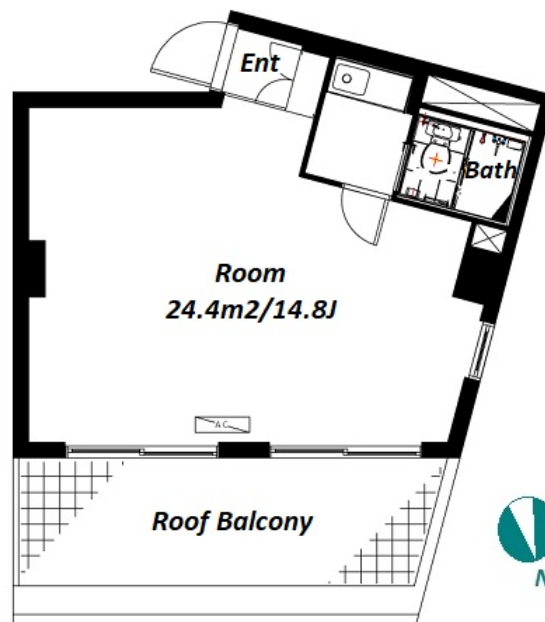


<b>Sales Price</b>	53,400,000 JPY	<b>Access</b>	<b>Gaienmae</b> Station on Omotesandou Station on Nogizaka Station on	<b>Ginza</b> Line 5 min. walk Ginza Line 9 min. walk Chiyoda Line 14 min. walk
<b>Tax</b>	Included			

<b>Property Name</b>	RAPPORT MINAMIAOYAMA
----------------------	----------------------

Vintage low-rise near Gaienmae Staion, 3 stations available



\*The actual Layout & Size may differ slightly from this floor plans & pictures.

<b>Address</b>	3F, 4-9-6, Minamiaoyama, Minato-Ku, Tokyo
----------------	---

#### Unit/Property Information

<b>LAYOUT</b>	Studio	<b>Management Fee</b>	JPY12,300/month
<b>Unit Floor</b>	3F	<b>Repair Fund</b>	JPY7,700/month
<b>Floor Size(sqm)</b>	30.8 m <sup>2</sup>	<b>Other Fee</b>	-
<b>Floor Size(sqft)</b>	331.52 ft <sup>2</sup>	<b>Total Monthly Fee</b>	JPY20,000/month
<b>Balcony</b>	8.92 m <sup>2</sup>	<b>Current Status</b>	Rented
<b>Facing</b>	South	<b>Hand Over</b>	Negotiable
<b>Unit Facilities</b>	Air-Con, Roof Balcony, Bathroom dryer		

#### Building Information

<b>Structure</b>	RC 4 floors above		
<b>Total Units</b>	10	<b>Completion</b>	Jan, 1989
<b>Car Parking</b>	-	<b>Pet</b>	N/A
<b>Developer Name</b>	-		
<b>Management company&amp;Type</b>	Nankai Building Service Co.,Ltd. Fully Outsourced / Patrol		
<b>Common Facility</b>	Delivery box, Elevator, New Earthquake Resistance Standard, Close to Station, Low-rise		

#### Remarks

<Unit/Property Information>  
<Building Information>  
<Land Information>

#### Land Information

<b>Lot Area</b>	-	<b>Land lease term</b>	-
<b>Ownership Type</b>	Ownership	<b>Land lease fee</b>	-
<b>Co-owner's Share</b>	-	<b>Land Category</b>	-
<b>City Planning area</b>	-		
<b>Use Zoning</b>	-		
<b>Current Status</b>	-	<b>Bldg. to Land %</b>	-
<b>Hand Over</b>	-	<b>Floor to Land %</b>	-
<b>Private Road</b>	-	<b>Set Back</b>	-
<b>Other Conditions</b>			



**HOUSEREP TOKYO INC.**

ハウスレップトーキョー株式会社

#301, 1-4-15, Hiroo, Shibuya-ku, Tokyo 150-0012, Japan

+81 (0)3 6427 5860

inquiry@housserep-tokyo.com

Transaction Type : Intermediate

Agent Fee : (3%+60,000JPY) + tax

Website : www.housserep-tokyo.com

