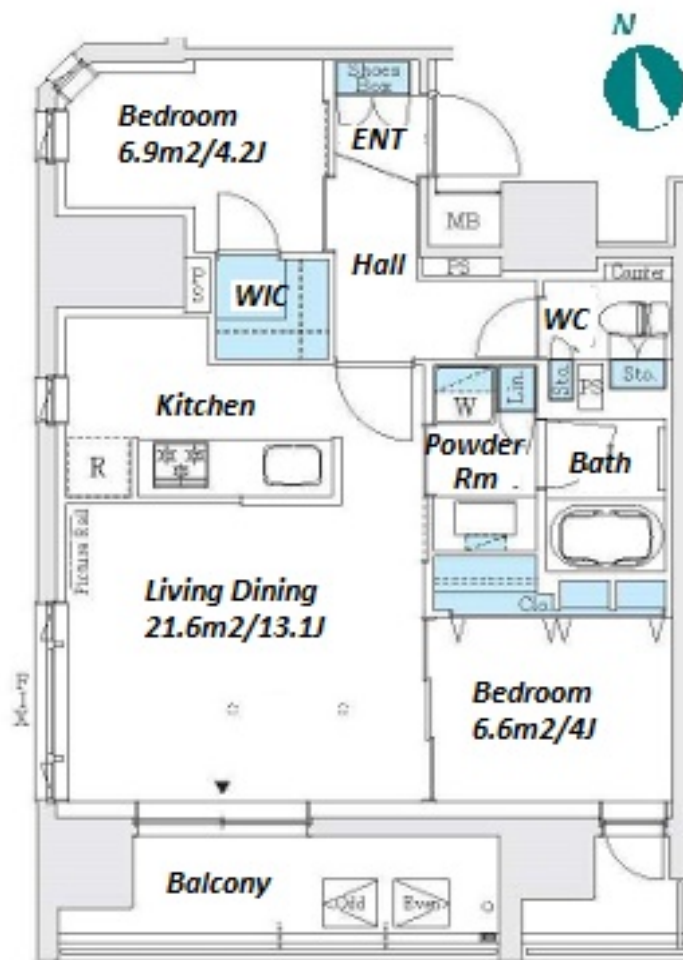
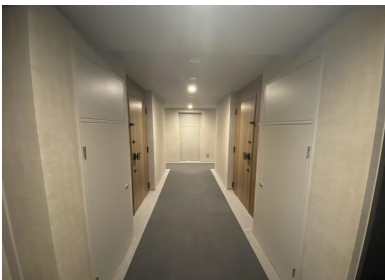


Property Name	J. GRAN COURT ASAKUSA	Unit No.	TYPE	Access	Asakusa Station on (7 min) Asakusa Station on Ginza Line (8 min)
		1101	Apt.		
Address	3-25-1, Asakusa, Taito-Ku, Tokyo				



*The actual Layout & Size may differ slightly from this floor plans & pictures.

Lease Conditions	
LAYOUT	2 BR
SIZE	52.71 m²/567.36 ft²
RENT	JPY 260,000 / month
Management Fee	JPY20,000/month
Deposit	1 month
Key Money	-
Lease Term	Standard lease for 24 months
Available	Early, Dec, 2024
Renewal Fee	1 month
Agent Fee	1 month + tax
Other Info	Key Replacement Fee : JPY15,000 Tax not included / Guarantor Company : TBC / No Key Money / Auto lock / Air-Con / Separated Toilet / Balcony / Internet Included / Penalty Fee for Early Cancellation / Flooring / Bathroom dryer / WIC

Building Information			
Completion	Sep, 2023	Earthquake Resistance	New
Structure	RC, 12 floors above		
Car Parking	JPY35,000 + tax / month		
Bicycle Parking	JPY300 + tax / month		
Music Instrument	-	Pet	Allowed
Facilities	Motorcycle Parking (JPY5,000 + tax / month) / Janitor / Delivery box / Elevator / 24h Garbage Drop-off / Newly-built (~1 y/o)		

Remarks
Renters Insurance : Required / Pet:additional deposit (1 month) / Pet : a small dog only



HOUSEREP TOKYO INC.

ハウスレップトーキョー株式会社

#301, 1-4-15, Hiroo, Shibuya-ku, Tokyo 150-0012, Japan

+81 (0)3 6427 5860

inquiry@housserrep-tokyo.com

Transaction Type : Intermediate

Agent Fee : 1 month + tax

Website : www.housserrep-tokyo.com

