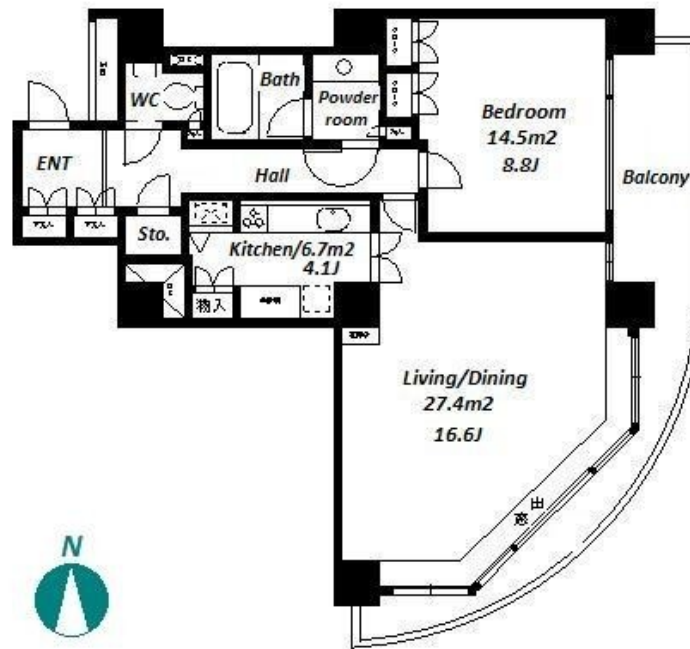


Property Name	RIVER POINT TOWER	Unit No.	TYPE	Access	Tsukishima Station on Yurakucho Line (7 min) Ecchujima Station on JR Keiyo Line (14 min)
		1505	Apt.		
Address	1-11-6, Tsukuda, Chuo-Ku, Tokyo				

High Rise Tower Residence in Tokyo Bay Area



Lease Conditions	
LAYOUT	1 BR
SIZE	72.69 m ² /782.42 ft ²
RENT	JPY 325,000 / month
Management Fee	-
Deposit	2 months
Key Money	1 month
Lease Term	Standard lease for 24 months
Available	Early, Oct, 2024
Renewal Fee	1 month
Agent Fee	1 month + tax
Other Info	Key Replacement Fee : JPY15,000 Tax not included / Guarantor Company : TBC / Auto lock / Air-Con / Separated Toilet / Balcony / Internet Included / Penalty Fee for Early Cancellation / Musical Instrument Negotiable / Flooring / IH Stoves / Bathroom dryer

Building Information	
Completion	Apr, 1989
Earthquake Resistance	New
Structure	SRC, 40 floors above and 2 basement floors
Car Parking	extra charge
Bicycle Parking	for 2 spaces extra charge
Music Instrument	Negotiable
Pet	-
Facilities	Motorcycle Parking (TBC) / Near Large Parks / Front desk / Janitor / Delivery box / Elevator / High-rise

Remarks
Renters Insurance : Required

*The actual Layout & Size may differ slightly from this floor plans & pictures.



HOUSEREP TOKYO INC.

ハウスレップトーキョー株式会社

#301, 1-4-15, Hiroo, Shibuya-ku, Tokyo 150-0012, Japan

+81 (0)3 6427 5860

inquiry@housserrep-tokyo.com

Transaction Type : Intermediate

Agent Fee : 1 month + tax

Website : www.housserrep-tokyo.com

