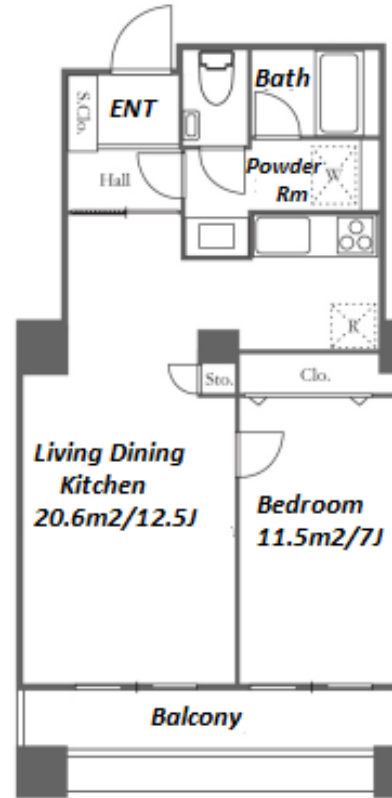


Property Name	RIVER CITY 21 EAST TOWERS 10	Unit No.	TYPE	Access	Tsukishima Station on Oedo Line (5 min) Tsukishima Station on Yurakucho Line (7 min) Hacchoubori Station on Hibiya Line (13 min)
		2304	Apt.		
Address	2-2-10, Tsukuda, Chuo-Ku, Tokyo				

Renovated Waterfront Apt. in Tsukishima, Tokyo Bay Area



Lease Conditions	
LAYOUT	1 BR
SIZE	48.78 m²/525.06 ft²
RENT	JPY 211,000 / month
Management Fee	JPY 10,000/month
Deposit	2 months
Key Money	-
Lease Term	Standard lease for 24 months
Available	Mid, Oct, 2024
Renewal Fee	1 month
Agent Fee	1 month + tax
Other Info	Key Replacement Fee : JPY15,000 Tax not included / Guarantor Company : TBC / No Key Money / Auto lock / Renovated / Air-Con / Separated Toilet / Balcony / Internet (Extra Charge) / Penalty Fee for Early Cancellation / Nice Views / Flooring / IH Stoves / Bathroom dryer / 2 Car Parks

Building Information			
Completion	Mar, 1991	Earthquake Resistance	New
Structure	SRC, 37 floors above and 2 basement floors		
Car Parking	JPY30,000 + tax / month		
Bicycle Parking	TBC		
Music Instrument	-	Pet	N/A
Facilities	Motorcycle Parking (TBC) / Trunk Room ((Included)) / Within 20 min to Tokyo station by car / Near Large Parks / Janitor / Delivery box / Elevator / Sky lounge / Security / Close to Station / High-rise		

*The actual Layout & Size may differ slightly from this floor plans & pictures.



HOUSEREP TOKYO INC.

ハウスレップトーキョー株式会社

#301, 1-4-15, Hiroo, Shibuya-ku, Tokyo 150-0012, Japan

+81 (0)3 6427 5860

inquiry@housserep-tokyo.com

Transaction Type : Intermediate

Agent Fee : 1 month + tax

Website : www.housserep-tokyo.com



Remarks
Renters Insurance : Required / Parking : 3 months deposit